

Product datasheet for **TA339648**

DBX1 Rabbit Polyclonal Antibody

Product data:

Product Type:	Primary Antibodies
Applications:	WB
Recommended Dilution:	WB
Reactivity:	Human
Host:	Rabbit
Isotype:	IgG
Clonality:	Polyclonal
Immunogen:	The immunogen for anti-DBX1 antibody: synthetic peptide directed towards the middle region of human DBX1. Synthetic peptide located within the following region: GGCREQTLPTKLNPHPDLSDVGQKGPNEEEEEEGPGSPSHRLAYHASSDP
Formulation:	Liquid. Purified antibody supplied in 1x PBS buffer with 0.09% (w/v) sodium azide and 2% sucrose. <i>Note that this product is shipped as lyophilized powder to China customers.</i>
Concentration:	lot specific
Purification:	Affinity Purified
Conjugation:	Unconjugated
Storage:	Store at -20°C as received.
Stability:	Stable for 12 months from date of receipt.
Predicted Protein Size:	41 kDa
Gene Name:	developing brain homeobox 1
Database Link:	NP_001025036 Entrez Gene 120237 Human A6NMT0
Background:	DBX1 could have a role in patterning the central nervous system during embryogenesis. DBX1 has a key role in regulating the distinct phenotypic features that distinguish two major classes of ventral interneurons, V0 and V1 neurons. DBX1 regulates the transcription factor profile, neurotransmitter phenotype, intraspinal migratory path and axonal trajectory of V0 neurons, features that differentiate them from an adjacent set of V1 neurons.

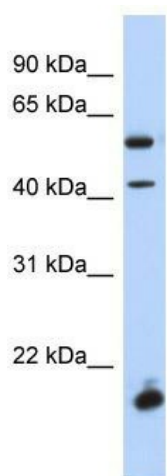


[View online »](#)

Synonyms: developing brain homeobox 1

Note: Immunogen Sequence Homology: Pig: 100%; Human: 100%; Guinea pig: 100%; Rat: 93%; Horse: 93%; Mouse: 93%; Bovine: 93%; Rabbit: 86%; Dog: 85%

Product images:



WB Suggested Anti-DBX1 Antibody Titration: 0.2-1 ug/ml; ELISA Titer: 1: 62500; Positive Control: Human Spleen