

Product datasheet for **TA339647**

ZNF312B (FEZF1) Rabbit Polyclonal Antibody

Product data:

Product Type:	Primary Antibodies
Applications:	IHC, WB
Recommended Dilution:	WB, IHC
Reactivity:	Human
Host:	Rabbit
Isotype:	IgG
Clonality:	Polyclonal
Immunogen:	The immunogen for anti-FEZF1 antibody: synthetic peptide directed towards the C terminal of human FEZF1. Synthetic peptide located within the following region: CPTCGKGFERNFDLKKHVRKHLHSSLGLARTPAGEPGTEPPPLPQQPPM
Formulation:	Liquid. Purified antibody supplied in 1x PBS buffer with 0.09% (w/v) sodium azide and 2% sucrose. <i>Note that this product is shipped as lyophilized powder to China customers.</i>
Concentration:	lot specific
Purification:	Affinity Purified
Conjugation:	Unconjugated
Storage:	Store at -20°C as received.
Stability:	Stable for 12 months from date of receipt.
Predicted Protein Size:	52 kDa
Gene Name:	FEZ family zinc finger 1
Database Link:	NP_001019784 Entrez Gene 389549 Human A0PJY2



[View online »](#)

Background:

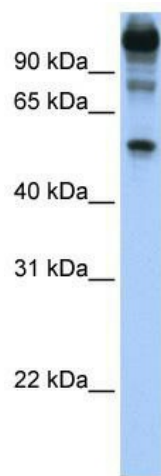
FEZF1 is a transcription repressor. It is involved in the axonal projection and proper termination of olfactory sensory neurons (OSN). It plays a role in rostro-caudal patterning of the diencephalon and in prethalamic formation. Expression of the FEZF1 is required in OSN to cell-autonomously regulate OSN axon projections. FEZF1 regulates non-cell-autonomously the layer formation of the olfactory bulb development and the interneurons. It may be required for correct rostral migration of the interneuron progenitors.

Synonyms:

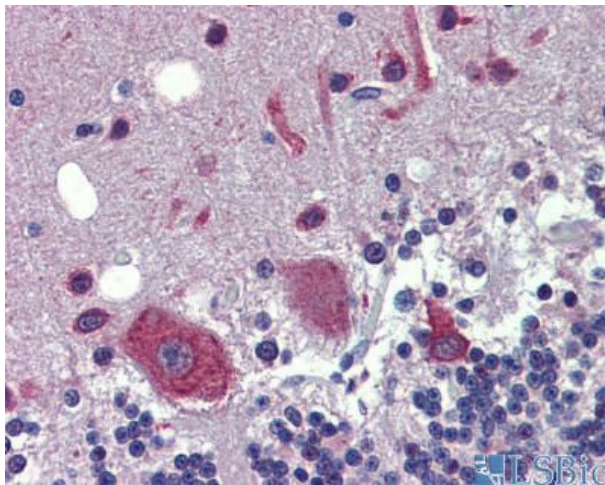
FEZ; HH22; ZNF312B

Note:

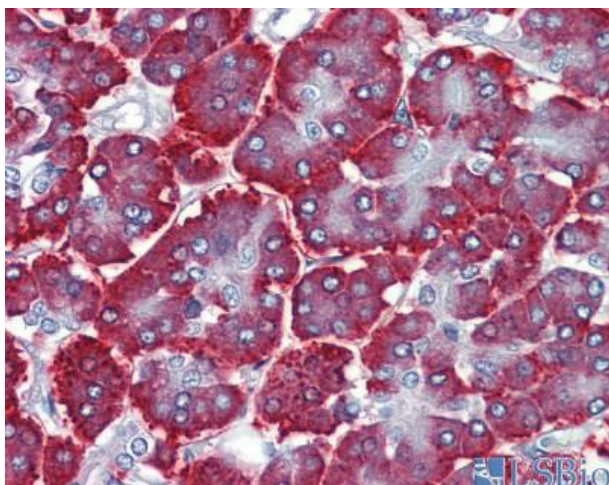
Immunogen Sequence Homology: Rat: 100%; Human: 100%; Rabbit: 92%; Pig: 79%; Horse: 79%; Guinea pig: 79%

Product images:

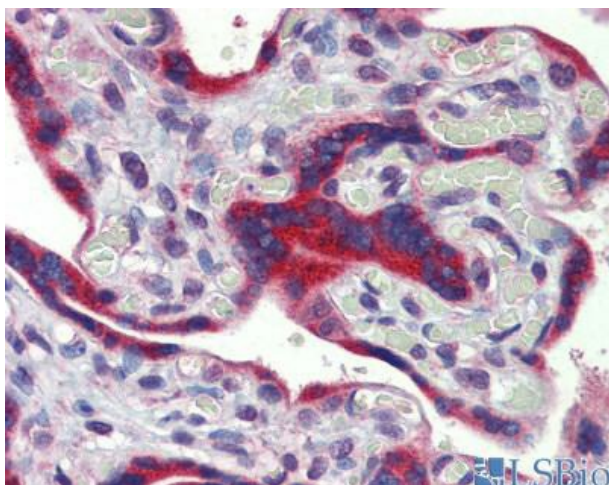
WB Suggested Anti-FEZF1 Antibody Titration: 1 ug/ml; Positive Control: Hela cell lysate



Human Pancreas



Human Pancreas



Human Placenta