

Product datasheet for **TA339645**

ARID3C Rabbit Polyclonal Antibody

Product data:

Product Type:	Primary Antibodies
Applications:	WB
Recommended Dilution:	WB
Reactivity:	Human
Host:	Rabbit
Isotype:	IgG
Clonality:	Polyclonal
Immunogen:	The immunogen for anti-ARID3C antibody: synthetic peptide directed towards the C terminal of human ARID3C. Synthetic peptide located within the following region: MGPMDPPRPCMPPSFLPRGKVPLREERLDGPLNLAGSGISSINMALEING
Formulation:	Liquid. Purified antibody supplied in 1x PBS buffer with 0.09% (w/v) sodium azide and 2% sucrose. <i>Note that this product is shipped as lyophilized powder to China customers.</i>
Concentration:	lot specific
Purification:	Affinity Purified
Conjugation:	Unconjugated
Storage:	Store at -20°C as received.
Stability:	Stable for 12 months from date of receipt.
Predicted Protein Size:	44 kDa
Gene Name:	AT-rich interaction domain 3C
Database Link:	NP_001017363 Entrez Gene 138715 Human A6NKF2



[View online »](#)

Background:

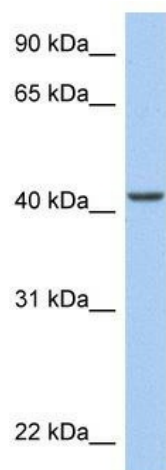
ARID3C is a member of the ARID (AT-rich interaction domain) family of proteins. The ARID domain is a helix-turn-helix motif-based DNA-binding domain. ARID family members have roles in embryonic patterning, cell lineage gene regulation, cell cycle control, transcriptional regulation and possibly in chromatin structure modification. This gene is a member of the ARID (AT-rich interaction domain) family of proteins. The ARID domain is a helix-turn-helix motif-based DNA-binding domain. ARID family members have roles in embryonic patterning, cell lineage gene regulation, cell cycle control, transcriptional regulation and possibly in chromatin structure modification. PRIMARYREFSEQ_SPAN PRIMARY_IDENTIFIER PRIMARY_SPAN COMP 1-318 AL450283.16 15235-15552 c 319-391 AL450283.16 13280-13352 c 392-575 AL450283.16 11402-11585 c 576-865 AL450283.16 10963-11252 c 866-1048 AL450283.16 9885-10067 c 1049-1138 AL450283.16 9558-9647 c 1139-1239 AL450283.16 8996-9096 c

Synonyms:

AT rich interactive domain 3C (BRIGHT- like); AT rich interactive domain 3C (BRIGHT-like)

Note:

Immunogen Sequence Homology: Dog: 100%; Pig: 100%; Rat: 100%; Human: 100%; Mouse: 100%; Rabbit: 93%; Bovine: 92%; Guinea pig: 86%

Product images:

WB Suggested Anti-ARID3C Antibody Titration: 0.2-1 ug/ml; Positive Control: HeLa cell lysate