

Product datasheet for **TA339644**

PURG Rabbit Polyclonal Antibody

Product data:

Product Type:	Primary Antibodies
Applications:	WB
Recommended Dilution:	WB
Reactivity:	Human
Host:	Rabbit
Isotype:	IgG
Clonality:	Polyclonal
Immunogen:	The immunogen for anti-PURG antibody: synthetic peptide directed towards the N terminal of human PURG. Synthetic peptide located within the following region: ERARRRGGGGGRGRGGKNVGGSGLSKSRLYPQAQHSYHYAASATPNQA
Formulation:	Liquid. Purified antibody supplied in 1x PBS buffer with 0.09% (w/v) sodium azide and 2% sucrose. <i>Note that this product is shipped as lyophilized powder to China customers.</i>
Concentration:	lot specific
Purification:	Affinity Purified
Conjugation:	Unconjugated
Storage:	Store at -20°C as received.
Stability:	Stable for 12 months from date of receipt.
Predicted Protein Size:	36 kDa
Gene Name:	purine-rich element binding protein G
Database Link:	NP_001015508 Entrez Gene 29942 Human Q9UJV8



[View online »](#)

Background:

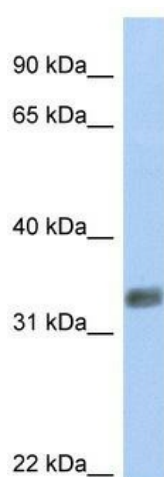
The exact function of PURG is not known, however, it is highly similar to purine-rich element binding protein A. The latter is a DNA-binding protein which binds preferentially to the single strand of the purine-rich element termed PUR, and has been implicated in the control of both DNA replication and transcription. The exact function of this gene is not known, however, its encoded product is highly similar to purine-rich element binding protein A. The latter is a DNA-binding protein which binds preferentially to the single strand of the purine-rich element termed PUR, and has been implicated in the control of both DNA replication and transcription. This gene lies in close proximity to the Werner syndrome gene, but on the opposite strand, on chromosome 8p11. Two transcript variants encoding different isoforms have been found for this gene.

Synonyms:

PURG-A; PURG-B

Note:

Immunogen Sequence Homology: Pig: 100%; Horse: 100%; Human: 100%; Mouse: 100%; Bovine: 100%; Dog: 93%; Rat: 93%; Guinea pig: 93%

Product images:

WB Suggested Anti-PURG Antibody Titration: 0.2-1 ug/ml; Positive Control: 721_B cell lysate PURG is supported by BioGPS gene expression data to be expressed in 721_B