

Product datasheet for **TA339643**

Protocadherin 21 (CDHR1) Rabbit Polyclonal Antibody

Product data:

| | |
|-------------------------|--|
| Product Type: | Primary Antibodies |
| Applications: | WB |
| Recommended Dilution: | WB |
| Reactivity: | Human |
| Host: | Rabbit |
| Isotype: | IgG |
| Clonality: | Polyclonal |
| Immunogen: | The immunogen for anti-PCDH21 antibody: synthetic peptide directed towards the N terminal of human PCDH21. Synthetic peptide located within the following region: GSHVYTLNGTDPEGDPISYHISFDPSTRSVFSVDPTFGNITLVEELDRER |
| Formulation: | Liquid. Purified antibody supplied in 1x PBS buffer with 0.09% (w/v) sodium azide and 2% sucrose. |
| Concentration: | lot specific |
| Purification: | Affinity Purified |
| Conjugation: | Unconjugated |
| Storage: | Store at -20°C as received. |
| Stability: | Stable for 12 months from date of receipt. |
| Predicted Protein Size: | 91 kDa |
| Gene Name: | cadherin related family member 1 |
| Database Link: | NP_149091 Entrez Gene 92211 Human Q96JP9 |
| Background: | This gene is a member of the cadherin superfamily of calcium-dependent cell-cell adhesion molecules. This non-classical cadherin appears to be exclusively expressed in the mitral and tufted cells in the main and accessory olfactory bulbs of the brain, suggesting a possible role in the formation and maintenance of neuronal networks. Alternatively spliced transcript variants encoding different isoform have been identified. |
| Synonyms: | CORD15; PCDH21; PRCAD; RP65 |

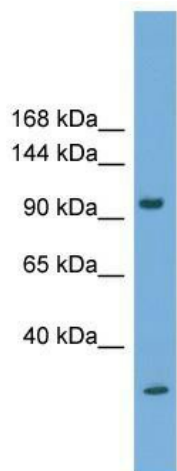


[View online »](#)

Note: Immunogen Sequence Homology: Rat: 100%; Human: 100%; Mouse: 100%; Dog: 93%; Horse: 93%; Bovine: 93%; Rabbit: 93%; Pig: 86%; Guinea pig: 86%; Zebrafish: 77%

Protein Families: Druggable Genome, Transmembrane

Product images:



WB Suggested Anti-CDHR1 Antibody Titration:
0.2-1 ug/ml; ELISA Titer: 1: 1562500; Positive
Control: Human heart