

## Product datasheet for **TA339641**

### PCDH15 Rabbit Polyclonal Antibody

#### Product data:

Product Type:	Primary Antibodies
Applications:	WB
Recommended Dilution:	WB
Reactivity:	Human
Host:	Rabbit
Isotype:	IgG
Clonality:	Polyclonal
Immunogen:	The immunogen for anti-PCDH15 antibody: synthetic peptide directed towards the N terminal of human PCDH15. Synthetic peptide located within the following region: HSIVVQVCINKKVGTTIYHEVRIVRDRNDNSPTFKHESYYATVNELTP
Formulation:	Liquid. Purified antibody supplied in 1x PBS buffer with 0.09% (w/v) sodium azide and 2% sucrose. <i>Note that this product is shipped as lyophilized powder to China customers.</i>
Concentration:	lot specific
Purification:	Affinity Purified
Conjugation:	Unconjugated
Storage:	Store at -20°C as received.
Stability:	Stable for 12 months from date of receipt.
Predicted Protein Size:	80 kDa
Gene Name:	protocadherin-related 15
Database Link:	<a href="#">NP_001136235</a> <a href="#">Entrez Gene 65217 Human Q96QU1</a>



[View online »](#)

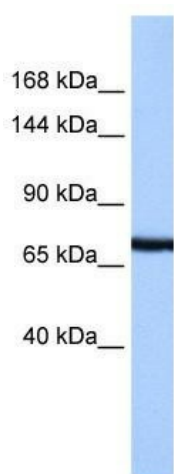
**Background:** PCDH15 is a member of the cadherin superfamily. Family members encode integral membrane proteins that mediate calcium-dependent cell-cell adhesion. PCDH15 consists of a signal peptide, 11 extracellular calcium-binding domains, a transmembrane domain and a unique cytoplasmic domain. It plays an essential role in maintenance of normal retinal and cochlear function. Mutations in this gene have been associated with hearing loss, which is consistent with its location at the Usher syndrome type 1F (USH1F) critical region on chromosome 10.

**Synonyms:** CDHR15; DFNB23; USH1F

**Note:** Immunogen Sequence Homology: Pig: 100%; Rat: 100%; Human: 100%; Mouse: 100%; Bovine: 100%; Rabbit: 100%; Guinea pig: 100%; Dog: 93%

**Protein Families:** Druggable Genome, Transmembrane

### Product images:



WB Suggested Anti-PCDH15 Antibody Titration:  
0.2-1 ug/ml; Positive Control: HepG2 cell lysate