

Product datasheet for **TA339639**

GAL3ST3 Rabbit Polyclonal Antibody

Product data:

Product Type:	Primary Antibodies
Applications:	WB
Recommended Dilution:	WB
Reactivity:	Human
Host:	Rabbit
Isotype:	IgG
Clonality:	Polyclonal
Immunogen:	The immunogen for anti-GAL3ST3 antibody: synthetic peptide directed towards the middle region of human GAL3ST3. Synthetic peptide located within the following region: AHNTLAYDLGGDNERSPRDDAAYLAGLIRQVEEVFSLVMIAEYFDESLVL
Formulation:	Liquid. Purified antibody supplied in 1x PBS buffer with 0.09% (w/v) sodium azide and 2% sucrose.
Concentration:	lot specific
Purification:	Affinity Purified
Conjugation:	Unconjugated
Storage:	Store at -20°C as received.
Stability:	Stable for 12 months from date of receipt.
Predicted Protein Size:	49 kDa
Gene Name:	galactose-3-O-sulfotransferase 3
Database Link:	NP_149025 Entrez Gene 89792 Human Q96A11



[View online »](#)

Background:

GAL3ST3 is a member of the galactose-3-O-sulfotransferase protein family. It catalyzes sulfonation by transferring a sulfate group to the 3' position of galactose in N-acetyllactosamine in both type 2 (Gal-beta-1-4GlcNAc-R) oligosaccharides and core-2-branched O-glycans, but not on type 1 or core-1-branched structures. This gene, which has also been referred to as GAL3ST2, is different from the GAL3ST2 gene located on chromosome 2 that encodes a related enzyme with distinct tissue distribution and substrate specificities, compared to galactose-3-O-sulfotransferase 3.

Synonyms:

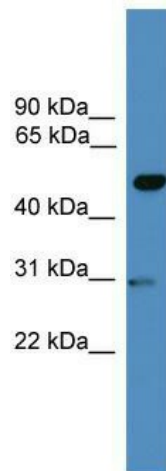
GAL3ST-3; GAL3ST2

Note:

Immunogen Sequence Homology: Dog: 100%; Pig: 100%; Rat: 100%; Horse: 100%; Human: 100%; Mouse: 100%; Bovine: 100%; Rabbit: 100%; Guinea pig: 93%

Protein Families:

Transmembrane

Product images:

WB Suggested Anti-GAL3ST3 Antibody Titration:
0.2-1 ug/ml; ELISA Titer: 1: 1562500; Positive
Control: MCF7 cell lysate