

Product datasheet for **TA339638**

TMEM158 Rabbit Polyclonal Antibody

Product data:

Product Type:	Primary Antibodies
Applications:	WB
Recommended Dilution:	WB
Reactivity:	Human
Host:	Rabbit
Isotype:	IgG
Clonality:	Polyclonal
Immunogen:	The immunogen for anti-SEC22C antibody: synthetic peptide directed towards the middle region of human SEC22C. Synthetic peptide located within the following region: FRMEPV TALGILSLILNIMCAALNLIRGVHLAEHSLQVAHEEIGNILAFL
Formulation:	Liquid. Purified antibody supplied in 1x PBS buffer with 0.09% (w/v) sodium azide and 2% sucrose. <i>Note that this product is shipped as lyophilized powder to China customers.</i>
Concentration:	lot specific
Purification:	Affinity Purified
Conjugation:	Unconjugated
Storage:	Store at -20°C as received.
Stability:	Stable for 12 months from date of receipt.
Predicted Protein Size:	34 kDa
Gene Name:	transmembrane protein 158 (gene/pseudogene)
Database Link:	NP_056259 Entrez Gene 25907 Human Q8WZ71
Background:	The protein encoded by this gene is a member of the SEC22 family of vesicle trafficking proteins. It is localized at the endoplasmic reticulum and it is thought to play a role in the early stages of the ER-Golgi protein trafficking. There are two alternat
Synonyms:	BBP; p40BBP; RIS1

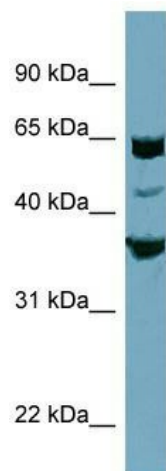


[View online »](#)

Note: Immunogen Sequence Homology: Dog: 100%; Pig: 100%; Horse: 100%; Human: 100%; Bovine: 100%; Rabbit: 100%; Guinea pig: 93%; Rat: 86%; Mouse: 86%

Protein Families: Druggable Genome

Product images:



WB Suggested Anti-SEC22C Antibody Titration:
0.2-1 ug/ml; ELISA Titer: 1: 1562500; Positive
Control: PANC1 cell lysate