

Product datasheet for **TA339637**

Dispatched (DISP1) Rabbit Polyclonal Antibody

Product data:

Product Type:	Primary Antibodies
Applications:	WB
Recommended Dilution:	WB
Reactivity:	Human
Host:	Rabbit
Isotype:	IgG
Clonality:	Polyclonal
Immunogen:	The immunogen for anti-DISP1 antibody: synthetic peptide directed towards the middle region of human DISP1. Synthetic peptide located within the following region: FVLCDVWNYTKFDKPHAETSETVSITLQHAALSMFVTSFTTAAAFYANYV
Formulation:	Liquid. Purified antibody supplied in 1x PBS buffer with 0.09% (w/v) sodium azide and 2% sucrose.
Concentration:	lot specific
Purification:	Affinity Purified
Conjugation:	Unconjugated
Storage:	Store at -20°C as received.
Stability:	Stable for 12 months from date of receipt.
Predicted Protein Size:	171 kDa
Gene Name:	dispatched RND transporter family member 1
Database Link:	NP_116279 Entrez Gene 84976 Human Q96F81



[View online »](#)

Background:

DISP1 functions in hedgehog (Hh) signaling. Regulates the release and extracellular accumulation of cholesterol-modified hedgehog proteins and is hence required for effective production of the Hh signal. The pattern of cellular proliferation and differentiation that leads to normal development of embryonic structures often depends upon the localized production of secreted protein signals. Cells surrounding the source of a particular signal respond in a graded manner according to the effective concentration of the signal, and this response produces the pattern of cell types constituting the mature structure. A novel segment-polarity gene known as dispatched has been identified in *Drosophila* and its protein product is required for normal Hedgehog (Hh) signaling. This gene is one of two human homologs of *Drosophila* dispatched and, based on sequence identity to its mouse counterpart, the encoded protein may play an essential role in Hh patterning activities in the early embryo.

Synonyms:

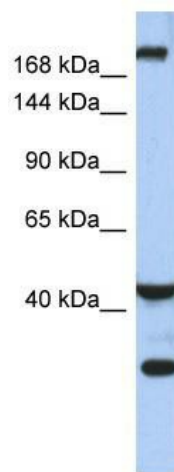
DISPA

Note:

Immunogen Sequence Homology: Human: 100%; Rabbit: 100%; Horse: 93%; Mouse: 93%; Pig: 86%; Rat: 86%; Zebrafish: 79%

Protein Families:

Transmembrane

Product images:

WB Suggested Anti-DISP1 Antibody Titration: 0.2-1 ug/ml; ELISA Titer: 1: 1562500; Positive Control: Human Small Intestine