

## Product datasheet for **TA339636**

### ABHD13 Rabbit Polyclonal Antibody

#### Product data:

Product Type:	Primary Antibodies
Applications:	WB
Recommended Dilution:	WB
Reactivity:	Human
Host:	Rabbit
Isotype:	IgG
Clonality:	Polyclonal
Immunogen:	The immunogen for anti-ABHD13 antibody: synthetic peptide directed towards the C terminal of human ABHD13. Synthetic peptide located within the following region: LAIFPDGTHNDTWQCQGYFTALEQFIKEVKSHSPEEMAKTSSNVTII
Formulation:	Liquid. Purified antibody supplied in 1x PBS buffer with 0.09% (w/v) sodium azide and 2% sucrose. <i>Note that this product is shipped as lyophilized powder to China customers.</i>
Concentration:	lot specific
Purification:	Affinity Purified
Conjugation:	Unconjugated
Storage:	Store at -20°C as received.
Stability:	Stable for 12 months from date of receipt.
Predicted Protein Size:	38 kDa
Gene Name:	abhydrolase domain containing 13
Database Link:	<a href="#">NP_116248</a> <a href="#">Entrez Gene 84945 Human</a> <a href="#">Q7L211</a>
Background:	ABHD13 is a single-pass type II membrane protein. It belongs to the serine esterase family. The exact function of ABHD13 remains unknown. Western blots using two different antibodies against two unique regions of this protein target confirm the same apparent molecular weight in our tests.
Synonyms:	bA153I24.2; BEM46L1; C13orf6

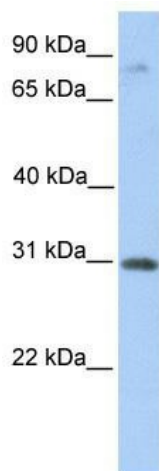


[View online »](#)

**Note:** Immunogen Sequence Homology: Dog: 100%; Pig: 100%; Rat: 100%; Horse: 100%; Human: 100%; Mouse: 100%; Bovine: 100%; Guinea pig: 100%; Rabbit: 93%; Zebrafish: 93%

**Protein Families:** Protease, Transmembrane

**Product images:**



WB Suggested Anti-ABHD13 Antibody Titration:  
0.2-1 ug/ml; Positive Control: Human Placenta