

Product datasheet for **TA339634**

FIBCD1 Rabbit Polyclonal Antibody

Product data:

Product Type:	Primary Antibodies
Applications:	WB
Recommended Dilution:	WB, IF
Reactivity:	Mouse, Human
Host:	Rabbit
Isotype:	IgG
Clonality:	Polyclonal
Immunogen:	The immunogen for anti-FIBCD1 antibody: synthetic peptide directed towards the C terminal of human FIBCD1. Synthetic peptide located within the following region: DGYPLTVADYSGTAGDSLKHSGMRFITTKDRSDHSENNCAAFYRGAWWY
Formulation:	Liquid. Purified antibody supplied in 1x PBS buffer with 0.09% (w/v) sodium azide and 2% sucrose. <i>Note that this product is shipped as lyophilized powder to China customers.</i>
Concentration:	lot specific
Purification:	Affinity Purified
Conjugation:	Unconjugated
Storage:	Store at -20°C as received.
Stability:	Stable for 12 months from date of receipt.
Predicted Protein Size:	51 kDa
Gene Name:	fibrinogen C domain containing 1
Database Link:	NP_116232 Entrez Gene 98970 Mouse Entrez Gene 84929 Human Q8N539
Background:	FIBCD1 is a single-pass membrane protein. It contains 1 fibrinogen C-terminal domain. The exact function of FIBCD1 remains unknown.
Synonyms:	FLJ14810

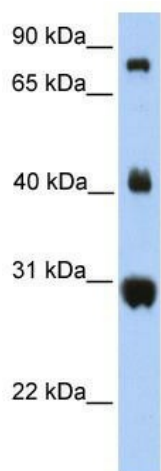


[View online »](#)

Note: Immunogen Sequence Homology: Pig: 100%; Rat: 100%; Horse: 100%; Human: 100%; Mouse: 100%; Bovine: 100%; Rabbit: 100%; Dog: 92%; Zebrafish: 92%; Guinea pig: 86%

Protein Families: Druggable Genome, Transmembrane

Product images:



WB Suggested Anti-FIBCD1 Antibody Titration:
0.2-1 ug/ml; Positive Control: Human Lung