

Product datasheet for **TA339632**

LRP11 Rabbit Polyclonal Antibody

Product data:

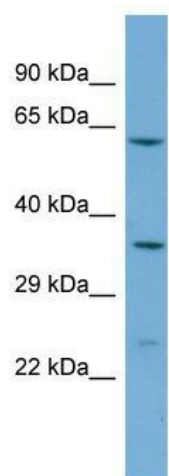
Product Type:	Primary Antibodies
Applications:	WB
Recommended Dilution:	WB
Reactivity:	Human
Host:	Rabbit
Isotype:	IgG
Clonality:	Polyclonal
Immunogen:	The immunogen for Anti-LRP11 antibody is: synthetic peptide directed towards the C-terminal region of Human LRP11. Synthetic peptide located within the following region: RASPRQEKDAPPLSKAGQDVLHLPTDGVVLDGRESTDDHAIVQYEWALL
Formulation:	Liquid. Purified antibody supplied in 1x PBS buffer with 0.09% (w/v) sodium azide and 2% sucrose. <i>Note that this product is shipped as lyophilized powder to China customers.</i>
Concentration:	lot specific
Purification:	Affinity Purified
Conjugation:	Unconjugated
Storage:	Store at -20°C as received.
Stability:	Stable for 12 months from date of receipt.
Predicted Protein Size:	35 kDa
Gene Name:	LDL receptor related protein 11
Database Link:	NP_116221 Entrez Gene 84918 Human Q86VZ4
Background:	The function of this protein remains unknown.
Synonyms:	bA350J20.3; MANSC3
Note:	Immunogen Sequence Homology: Dog: 100%; Human: 100%; Mouse: 100%; Pig: 93%; Bovine: 93%; Rat: 86%; Horse: 86%; Rabbit: 86%; Guinea pig: 86%



[View online »](#)

Protein Families: Transmembrane

Product images:



Host: Rabbit; Target Name: LRP11; Sample
Tissue: HepG2 Whole Cell lysates; Antibody
Dilution: 1.0 ug/ml