

Product datasheet for **TA339629**

Junctional Adhesion Molecule C (JAM3) Rabbit Polyclonal Antibody

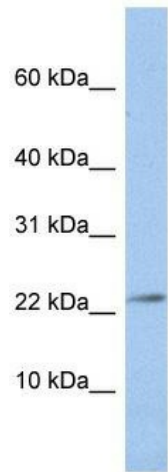
Product data:

Product Type:	Primary Antibodies
Applications:	WB
Recommended Dilution:	WB
Reactivity:	Human
Host:	Rabbit
Isotype:	IgG
Clonality:	Polyclonal
Immunogen:	The immunogen for anti-JAM3 antibody: synthetic peptide directed towards the N terminal of human JAM3. Synthetic peptide located within the following region: SSNRTPVWQEFESVELSCIITDSQTSDPRIEWKKIQDEQTTYVFFDNKIQ
Formulation:	Liquid. Purified antibody supplied in 1x PBS buffer with 0.09% (w/v) sodium azide and 2% sucrose. <i>Note that this product is shipped as lyophilized powder to China customers.</i>
Concentration:	lot specific
Purification:	Affinity Purified
Conjugation:	Unconjugated
Storage:	Store at -20°C as received.
Stability:	Stable for 12 months from date of receipt.
Predicted Protein Size:	28 kDa
Gene Name:	junctional adhesion molecule 3
Database Link:	NP_001192258 Entrez Gene 83700 Human Q9BX67



[View online »](#)

Background:	Tight junctions represent one mode of cell-to-cell adhesion in epithelial or endothelial cell sheets, forming continuous seals around cells and serving as a physical barrier to prevent solutes and water from passing freely through the paracellular space. JAM3, one member of the immunoglobulin superfamily, is localized in the tight junctions between high endothelial cells. Unlike other proteins in this family, this protein is unable to adhere to leukocyte cell lines and only forms weak homotypic interactions. JAM3 is a member of the junctional adhesion molecule protein family and acts as a receptor for another member of this family.
Synonyms:	JAM-2; JAM-3; JAM-C; JAMC
Note:	Immunogen Sequence Homology: Pig: 100%; Human: 100%; Mouse: 100%; Guinea pig: 100%; Dog: 93%; Rat: 93%; Horse: 93%; Bovine: 93%; Rabbit: 93%
Protein Families:	Druggable Genome, Transmembrane
Protein Pathways:	Cell adhesion molecules (CAMs), Epithelial cell signaling in Helicobacter pylori infection, Leukocyte transendothelial migration, Tight junction

Product images:

WB Suggested Anti-JAM3 Antibody Titration: 0.2-1 ug/ml; Positive Control: HepG2 cell lysate