

Product datasheet for **TA339628**

ORAI1 Rabbit Polyclonal Antibody

Product data:

Product Type:	Primary Antibodies
Applications:	WB
Recommended Dilution:	WB
Reactivity:	Human
Host:	Rabbit
Isotype:	IgG
Clonality:	Polyclonal
Immunogen:	The immunogen for anti-ORAI1 antibody: synthetic peptide directed towards the middle region of human ORAI1. Synthetic peptide located within the following region: IGTLLFLAEVLLCWVKFLPLKKQPGQPRPTSKPPASGAAANVSTSGITP
Formulation:	Liquid. Purified antibody supplied in 1x PBS buffer with 0.09% (w/v) sodium azide and 2% sucrose. <i>Note that this product is shipped as lyophilized powder to China customers.</i>
Concentration:	lot specific
Purification:	Affinity Purified
Conjugation:	Unconjugated
Storage:	Store at -20°C as received.
Stability:	Stable for 12 months from date of receipt.
Predicted Protein Size:	33 kDa
Gene Name:	ORAI calcium release-activated calcium modulator 1
Database Link:	NP_116179 Entrez Gene 84876 Human Q96D31



[View online »](#)

Background:

ORAI1 belongs to the Orai family. ORAI1 (CRACM1) is a plasma membrane protein essential for store-operated calcium entry. Defects in ORAI1 are a cause of severe combined immunodeficiency with CRAC channel dysfunction (CRAC-SCID). CRACM1 is a plasma membrane protein essential for store-operated calcium entry (Vig et al., 2006 [PubMed 16645049]). [supplied by OMIM]. Publication Note: This RefSeq record includes a subset of the publications that are available for this gene. Please see the Entrez Gene record to access additional publications. PRIMARYREFSEQ_SPAN PRIMARY_IDENTIFIER PRIMARY_SPAN COMP 1-331 BC075831.1 1-331 332-844 BC013386.1 220-732 845-990 BC075831.1 845-990 991-1490 BG574128.1 52-551 1491-1496 AK027372.1 1235-1240

Synonyms:

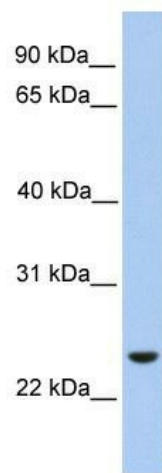
CRACM1; IMD9; ORAT1; TAM2; TMEM142A

Note:

Immunogen Sequence Homology: Dog: 100%; Pig: 100%; Human: 100%; Rabbit: 100%; Horse: 93%; Bovine: 93%; Rat: 86%; Yeast: 77%

Protein Families:

Transmembrane

Product images:

WB Suggested Anti-ORAI1 Antibody Titration: 0.2-1 ug/ml; Positive Control: HepG2 cell lysate