

Product datasheet for **TA339626**

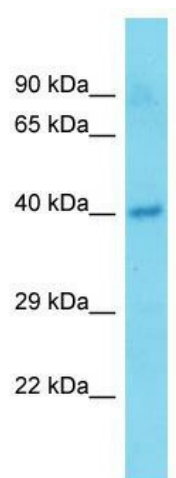
Tmem25 Rabbit Polyclonal Antibody

Product data:

Product Type:	Primary Antibodies
Applications:	WB
Recommended Dilution:	WB
Reactivity:	Mouse
Host:	Rabbit
Isotype:	IgG
Clonality:	Polyclonal
Immunogen:	The immunogen for Anti-Tmem25 antibody is synthetic peptide directed towards the C-terminal region of Mouse Tmem25. Synthetic peptide located within the following region: DVGVTASLPPAPGLLATRIEVPLLGIWVAGGLALGTLVGFSTLVACLVC
Formulation:	Liquid. Purified antibody supplied in 1x PBS buffer with 0.09% (w/v) sodium azide and 2% sucrose. <i>Note that this product is shipped as lyophilized powder to China customers.</i>
Concentration:	lot specific
Purification:	Affinity Purified
Conjugation:	Unconjugated
Storage:	Store at -20°C as received.
Stability:	Stable for 12 months from date of receipt.
Predicted Protein Size:	39 kDa
Gene Name:	transmembrane protein 25
Database Link:	NP_082141 Entrez Gene 71687 Mouse Q9DCF1
Background:	The function of this protein remains unknown.
Synonyms:	0610039J01Rik; FLJ14399
Note:	Immunogen Sequence Homology: Dog: 100%; Pig: 100%; Rat: 100%; Horse: 100%; Human: 100%; Mouse: 100%; Rabbit: 100%; Bovine: 93%; Guinea pig: 93%



[View online »](#)

Product images:

Host: Rabbit; Target Name: Tmem25; Sample
Tissue: Mouse Pancreas lysates; Antibody
Dilution: 1.0 ug/ml