

## Product datasheet for **TA339624**

### FCRLM1 (FCRLA) Rabbit Polyclonal Antibody

#### Product data:

Product Type:	Primary Antibodies
Applications:	WB
Recommended Dilution:	WB
Reactivity:	Human
Host:	Rabbit
Isotype:	IgG
Clonality:	Polyclonal
Immunogen:	The immunogen for anti-FCRLA antibody: synthetic peptide directed towards the C terminal of human FCRLA. Synthetic peptide located within the following region: MPDPHLYHQMGLLLKHMQDVRVLLGHLLMELRELSGHRKPGTTKATAE
Formulation:	Liquid. Purified antibody supplied in 1x PBS buffer with 0.09% (w/v) sodium azide and 2% sucrose. <i>Note that this product is shipped as lyophilized powder to China customers.</i>
Concentration:	lot specific
Purification:	Affinity Purified
Conjugation:	Unconjugated
Storage:	Store at -20°C as received.
Stability:	Stable for 12 months from date of receipt.
Predicted Protein Size:	41 kDa
Gene Name:	Fc receptor like A
Database Link:	<a href="#">NP_116127</a> <a href="#">Entrez Gene 84824 Human</a> <a href="#">Q7L513</a>



[View online »](#)

**Background:**

Receptors for the Fc fragment of IgG, or FCGRs, are cell surface glycoproteins of the Ig superfamily (IgSF). These receptors mediate phagocytosis of IgG-coated pathogens and promote activation of effector cells, leading to inflammatory responses and antibody-mediated cellular cytotoxicity. FCRLA may be implicated in B-cell differentiation and lymphomagenesis. Receptors for the Fc fragment of IgG, or FCGRs (see MIM 146790), are cell surface glycoproteins of the Ig superfamily (IgSF). These receptors mediate phagocytosis of IgG-coated pathogens and promote activation of effector cells, leading to inflammatory responses and antibody-mediated cellular cytotoxicity. All FCGR genes map to human chromosome 1. Additional genes in this region, including FREB, encode FCGR homologs that are selectively expressed in B cells and may be implicated in B-cell development and lymphomagenesis. [supplied by OMIM]. PRIMARYREFSEQ\_SPAN PRIMARY\_IDENTIFIER PRIMARY\_SPAN COMP 1-742 BM471887.1 3-744 743-1338 BC006521.2 558-1153 1339-1684 BX112608.1 318-663 1685-2357 BX649184.1 2243-2915

**Synonyms:**

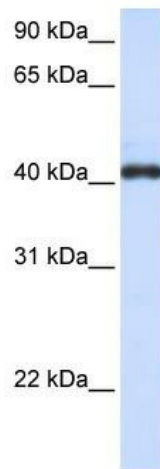
FCRL; FCRL1; FCRLb; FCRLc1; FCRLc2; FCRLd; FCRLe; FCRLM1; FCRLX; FCRX; FREB

**Note:**

Immunogen Sequence Homology: Human: 100%

**Protein Families:**

Secreted Protein, Transmembrane

**Product images:**

WB Suggested Anti-FCRLA Antibody Titration: 0.2-1 ug/ml; ELISA Titer: 1: 62500; Positive Control: HeLa cell lysate