

Product datasheet for **TA339623**

FCRLM1 (FCRLA) Rabbit Polyclonal Antibody

Product data:

Product Type:	Primary Antibodies
Applications:	WB
Recommended Dilution:	WB
Reactivity:	Human
Host:	Rabbit
Isotype:	IgG
Clonality:	Polyclonal
Immunogen:	The immunogen for anti-FCRLA antibody: synthetic peptide directed towards the middle region of human FCRLA. Synthetic peptide located within the following region: PTLNPAQKSAAPGTAPEEAPGPLPPPPTPSEDPGFSSPLGMPDPHLYH
Formulation:	Liquid. Purified antibody supplied in 1x PBS buffer with 0.09% (w/v) sodium azide and 2% sucrose. <i>Note that this product is shipped as lyophilized powder to China customers.</i>
Concentration:	lot specific
Purification:	Affinity Purified
Conjugation:	Unconjugated
Storage:	Store at -20°C as received.
Stability:	Stable for 12 months from date of receipt.
Predicted Protein Size:	41
Gene Name:	Fc receptor like A
Database Link:	NP_116127 Entrez Gene 84824 Human Q7L513
Background:	Receptors for the Fc fragment of IgG, or FCGRs, are cell surface glycoproteins of the Ig superfamily (IgSF). These receptors mediate phagocytosis of IgG-coated pathogens and promote activation of effector cells, leading to inflammatory responses and antibody-mediated cellular cytotoxicity. FCRLA may be implicated in B-cell differentiation and lymphomagenesis.



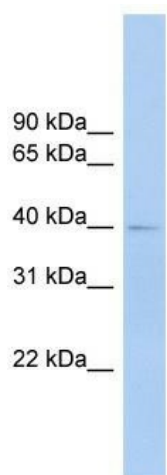
[View online »](#)

Synonyms: FCRL; FCRL1; FCRLb; FCRLc1; FCRLc2; FCRLd; FCRLe; FCRLM1; FCRLX; FCRX; FRED

Note: Immunogen Sequence Homology: Human: 100%

Protein Families: Secreted Protein, Transmembrane

Product images:



WB Suggested Anti-FCRLA Antibody Titration: 0.2-1 ug/ml; Positive Control: Human Lung