

## Product datasheet for TA339622

### Gpat3 Rabbit Polyclonal Antibody

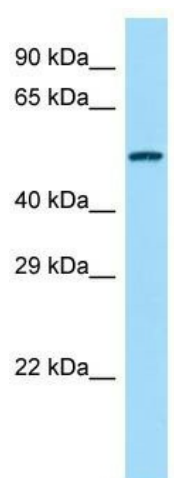
#### Product data:

Product Type:	Primary Antibodies
Applications:	WB
Recommended Dilution:	WB
Reactivity:	Rat
Host:	Rabbit
Isotype:	IgG
Clonality:	Polyclonal
Immunogen:	The immunogen for Anti-Agpat9 antibody is: synthetic peptide directed towards the middle region of Rat Agpat9. Synthetic peptide located within the following region: HGGLMGIIQRAMVKACPHVWFERSEIKDRHLVTKRLKEHIADKKKLPILI
Formulation:	Liquid. Purified antibody supplied in 1x PBS buffer with 0.09% (w/v) sodium azide and 2% sucrose. <i>Note that this product is shipped as lyophilized powder to China customers.</i>
Concentration:	lot specific
Purification:	Affinity Purified
Conjugation:	Unconjugated
Storage:	Store at -20°C as received.
Stability:	Stable for 12 months from date of receipt.
Predicted Protein Size:	50 kDa
Gene Name:	glycerol-3-phosphate acyltransferase 3
Database Link:	<a href="#">NP_001020841</a> <a href="#">Entrez Gene 305166 Rat Q4V8J4</a>
Background:	Agpat9 esterifies acyl-group from acyl-ACP to the sn-1 position of glycerol-3-phosphate, an essential step in glycerolipid biosynthesis.
Note:	Immunogen Sequence Homology: Dog: 100%; Pig: 100%; Rat: 100%; Human: 100%; Mouse: 100%; Rabbit: 100%; Guinea pig: 100%; Horse: 93%



[View online »](#)

## Product images:



Host: Rabbit; Target Name: Agpat9; Sample  
Tissue: Rat Spleen lysates; Antibody Dilution: 1.0  
ug/ml