

Product datasheet for **TA339621**

BSCL2 Rabbit Polyclonal Antibody

Product data:

Product Type:	Primary Antibodies
Applications:	WB
Recommended Dilution:	WB
Reactivity:	Human
Host:	Rabbit
Isotype:	IgG
Clonality:	Polyclonal
Immunogen:	The immunogen for anti-BSCL2 antibody: synthetic peptide directed towards the C terminal of human BSCL2. Synthetic peptide located within the following region: QEESTPQSDVTEDEGSPEDPSGTEGQLSEEEKPDQQPLSGEELEPEAS
Formulation:	Liquid. Purified antibody supplied in 1x PBS buffer with 0.09% (w/v) sodium azide and 2% sucrose. <i>Note that this product is shipped as lyophilized powder to China customers.</i>
Concentration:	lot specific
Purification:	Affinity Purified
Conjugation:	Unconjugated
Storage:	Store at -20°C as received.
Stability:	Stable for 12 months from date of receipt.
Predicted Protein Size:	51 kDa
Gene Name:	BSCL2, seipin lipid droplet biogenesis associated
Database Link:	NP_001116427 Entrez Gene 26580 Human Q96G97



[View online »](#)

Background:

This gene encodes protein seipin, which is located in the endoplasmic reticulum and may be important for lipid droplet morphology. Mutations in this gene have been associated with congenital generalized lipodystrophy type 2 or Berardinelli-Seip syndrome, a rare autosomal recessive disease characterized by a near absence of adipose tissue and severe insulin resistance. Alternatively spliced transcript variants encoding different isoforms have been found for this gene.

Synonyms:

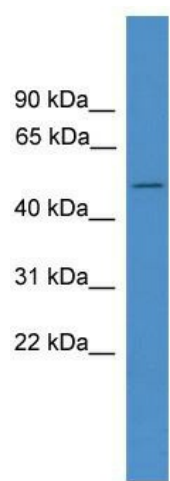
GNG3LG; HMN5; PELD; SPG17

Note:

Immunogen Sequence Homology: Rat: 100%; Human: 100%; Mouse: 100%; Rabbit: 100%; Horse: 92%; Dog: 86%; Bovine: 86%

Protein Families:

Druggable Genome, Transmembrane

Product images:

WB Suggested Anti-BSCL2 Antibody Titration: 0.2-1 ug/ml; ELISA Titer: 1: 312500; Positive Control: U937 cell lysate