

Product datasheet for **TA339619**

PIGO Rabbit Polyclonal Antibody

Product data:

Product Type:	Primary Antibodies
Applications:	WB
Recommended Dilution:	WB
Reactivity:	Human
Host:	Rabbit
Isotype:	IgG
Clonality:	Polyclonal
Immunogen:	The immunogen for anti-PIGO antibody: synthetic peptide directed towards the N terminal of human PIGO. Synthetic peptide located within the following region: LIDALRFDFAQPQHSHVPREPPVSLPFLGKLSSLQRILEIQPHHARLYRS
Formulation:	Liquid. Purified antibody supplied in 1x PBS buffer with 0.09% (w/v) sodium azide and 2% sucrose. <i>Note that this product is shipped as lyophilized powder to China customers.</i>
Concentration:	lot specific
Purification:	Affinity Purified
Conjugation:	Unconjugated
Storage:	Store at -20°C as received.
Stability:	Stable for 12 months from date of receipt.
Predicted Protein Size:	74 kDa
Gene Name:	phosphatidylinositol glycan anchor biosynthesis class O
Database Link:	NP_690577 Entrez Gene 84720 Human Q8TEQ8



[View online »](#)

Background: PIGO is a protein that is involved in glycosylphosphatidylinositol (GPI)-anchor biosynthesis. The GPI-anchor is a glycolipid which contains three mannose molecules in its core backbone. The GPI-anchor is found on many blood cells and serves to anchor proteins to the cell surface. PIGO is involved in the transfer of ethanolaminephosphate (EtNP) to the third mannose in GPI. This gene encodes a protein that is involved in glycosylphosphatidylinositol (GPI)-anchor biosynthesis. The GPI-anchor is a glycolipid which contains three mannose molecules in its core backbone. The GPI-anchor is found on many blood cells and serves to anchor proteins to the cell surface. This protein is involved in the transfer of ethanolaminephosphate (EtNP) to the third mannose in GPI. At least two alternatively spliced transcripts encoding distinct isoforms have been found for this gene.

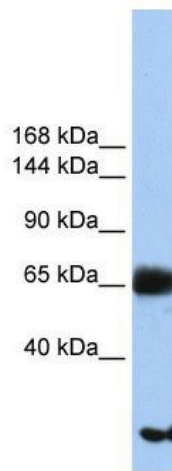
Synonyms: HPMRS2

Note: Immunogen Sequence Homology: Pig: 100%; Human: 100%; Guinea pig: 100%; Dog: 93%; Rat: 93%; Horse: 93%; Mouse: 93%; Rabbit: 93%; Bovine: 92%

Protein Families: Transmembrane

Protein Pathways: Glycosylphosphatidylinositol(GPI)-anchor biosynthesis, Metabolic pathways

Product images:



WB Suggested Anti-PIGO Antibody Titration: 0.2-1 ug/ml; Positive Control: HeLa cell lysate There is BioGPS gene expression data showing that PIGO is expressed in HeLa