

Product datasheet for **TA339616**

MS4A14 Rabbit Polyclonal Antibody

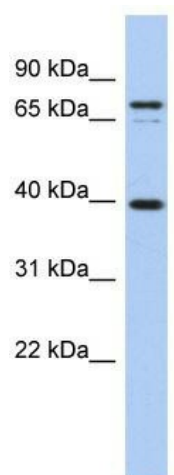
Product data:

Product Type:	Primary Antibodies
Applications:	WB
Recommended Dilution:	WB
Reactivity:	Human
Host:	Rabbit
Isotype:	IgG
Clonality:	Polyclonal
Immunogen:	The immunogen for anti-NYD-SP21 antibody: synthetic peptide directed towards the middle region of human NYD-SP21. Synthetic peptide located within the following region: QYPEGQSKDGGVVKDQQTDKQNSKKQTQDQQTEDQPAQEKKSPKGGQFQNV
Formulation:	Liquid. Purified antibody supplied in 1x PBS buffer with 0.09% (w/v) sodium azide and 2% sucrose.
Concentration:	lot specific
Purification:	Affinity Purified
Conjugation:	Unconjugated
Storage:	Store at -20°C as received.
Stability:	Stable for 12 months from date of receipt.
Predicted Protein Size:	76 kDa
Gene Name:	membrane spanning 4-domains A14
Database Link:	NP_115986 Entrez Gene 84689 Human Q96JA4
Background:	MS4A14 may be involved in signal transduction as a component of a multimeric receptor complex.
Synonyms:	MS4A16; NYD-SP21
Note:	Immunogen Sequence Homology: Human: 100%
Protein Families:	Transmembrane



[View online »](#)

Product images:



WB Suggested Anti-MS4A14 Antibody Titration:
0.2-1 ug/ml; ELISA Titer: 1: 312500; Positive
Control: PANC1 cell lysate