

## Product datasheet for **TA339615**

### St6gal2 Rabbit Polyclonal Antibody

#### Product data:

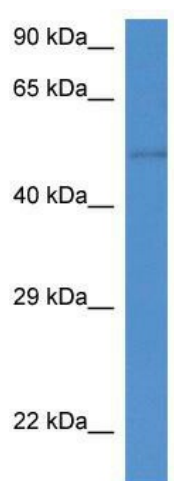
Product Type:	Primary Antibodies
Applications:	WB
Recommended Dilution:	WB
Reactivity:	Mouse
Host:	Rabbit
Isotype:	IgG
Clonality:	Polyclonal
Immunogen:	The immunogen for anti-St6gal2 antibody: synthetic peptide corresponding to a region of Mouse. Synthetic peptide located within the following region: RGLSSCAVMMSAGAILNSSLGEEIDSHDAVLRFN SAPTRGYEKDVGNKTT
Formulation:	Liquid. Purified antibody supplied in 1x PBS buffer with 0.09% (w/v) sodium azide and 2% sucrose. <i>Note that this product is shipped as lyophilized powder to China customers.</i>
Concentration:	lot specific
Purification:	Affinity Purified
Conjugation:	Unconjugated
Storage:	Store at -20°C as received.
Stability:	Stable for 12 months from date of receipt.
Predicted Protein Size:	50 kDa
Gene Name:	beta galactoside alpha 2,6 sialyltransferase 2
Database Link:	<a href="#">NP_766417</a> <a href="#">Entrez Gene 240119 Mouse</a> <a href="#">Q76K27</a>
Background:	The function of this protein remains unknown.
Synonyms:	CMP-N-acetylneuraminate-beta-galactosamide-alpha-2; FLJ30711; FLJ37730; FLJ38334; KIAA1877; SIAT2; ST6Gal-II; ST6GalIII



[View online »](#)

**Note:** Immunogen Sequence Homology: Dog: 100%; Pig: 100%; Rat: 100%; Human: 100%; Mouse: 100%; Bovine: 100%; Rabbit: 100%; Zebrafish: 93%; Guinea pig: 86%; Horse: 79%

**Product images:**



WB Suggested Anti-St6gal2 Antibody; Titration: 1.0 ug/ml; Positive Control: Mouse Small Intestine