

Product datasheet for **TA339613**

PPAPDC1B (PLPP5) Rabbit Polyclonal Antibody

Product data:

Product Type:	Primary Antibodies
Applications:	WB
Recommended Dilution:	WB
Reactivity:	Human
Host:	Rabbit
Isotype:	IgG
Clonality:	Polyclonal
Immunogen:	The immunogen for anti-PPAPDC1B antibody: synthetic peptide directed towards the middle region of human PPAPDC1B. Synthetic peptide located within the following region: KLIVGRPRPDDFFYRCFPDGLAHS DLMCTGDKD VVNEGRKSFPSGHSSFAF
Formulation:	Liquid. Purified antibody supplied in 1x PBS buffer with 0.09% (w/v) sodium azide and 2% sucrose. <i>Note that this product is shipped as lyophilized powder to China customers.</i>
Concentration:	lot specific
Purification:	Affinity Purified
Conjugation:	Unconjugated
Storage:	Store at -20°C as received.
Stability:	Stable for 12 months from date of receipt.
Predicted Protein Size:	29 kDa
Gene Name:	phospholipid phosphatase 5
Database Link:	NP_001096029 Entrez Gene 84513 Human Q8NEB5
Background:	PPAPDC1B is a multi-pass membrane protein and it belongs to the PA-phosphatase related phosphoesterase family. It may be a metastatic suppressor for hepatocellular carcinoma.
Synonyms:	DPPL1; HTPAP; PPAPDC1B

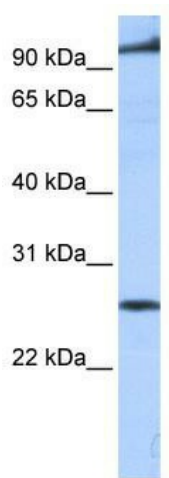


[View online »](#)

Note: Immunogen Sequence Homology: Pig: 100%; Rat: 100%; Horse: 100%; Human: 100%; Dog: 93%; Mouse: 93%; Bovine: 93%; Guinea pig: 86%; Rabbit: 79%; Zebrafish: 79%

Protein Families: Transmembrane

Product images:



WB Suggested Anti-PPAPDC1B Antibody Titration:
0.2-1 ug/ml; Positive Control: Human brain