

Product datasheet for **TA339612**

MEGF11 Rabbit Polyclonal Antibody

Product data:

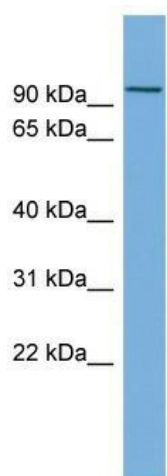
Product Type:	Primary Antibodies
Applications:	WB
Recommended Dilution:	WB
Reactivity:	Human
Host:	Rabbit
Isotype:	IgG
Clonality:	Polyclonal
Immunogen:	The immunogen for anti-MEGF11 antibody: synthetic peptide directed towards the middle region of human MEGF11. Synthetic peptide located within the following region: LMMEELNPYTKISPALGAERHSVAVTGIMLLLFLIVLLGLFAWHRRRQ
Formulation:	Liquid. Purified antibody supplied in 1x PBS buffer with 0.09% (w/v) sodium azide and 2% sucrose. <i>Note that this product is shipped as lyophilized powder to China customers.</i>
Concentration:	lot specific
Purification:	Affinity Purified
Conjugation:	Unconjugated
Storage:	Store at -20°C as received.
Stability:	Stable for 12 months from date of receipt.
Predicted Protein Size:	101 kDa
Gene Name:	multiple EGF like domains 11
Database Link:	NP_115821 Entrez Gene 84465 Human A6BM72
Background:	The function of MEGF11 remains unknown.
Synonyms:	DKFZp434L121; KIAA1781
Note:	Immunogen Sequence Homology: Dog: 100%; Pig: 100%; Rat: 100%; Human: 100%; Mouse: 100%; Bovine: 100%; Rabbit: 100%; Guinea pig: 100%; Horse: 93%; Zebrafish: 93%



[View online »](#)

Protein Families: Transmembrane

Product images:



WB Suggested Anti-MEGF11 Antibody Titration:
0.2-1 ug/ml; ELISA Titer: 1: 312500; Positive
Control: Human Muscle