

Product datasheet for **TA339611**

TMEM107 Rabbit Polyclonal Antibody

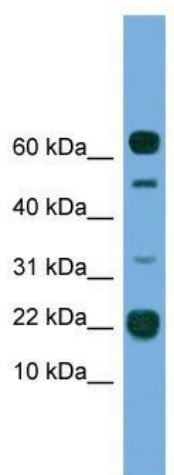
Product data:

Product Type:	Primary Antibodies
Applications:	WB
Recommended Dilution:	WB
Reactivity:	Human
Host:	Rabbit
Isotype:	IgG
Clonality:	Polyclonal
Immunogen:	The immunogen for anti-TMEM107 antibody: synthetic peptide directed towards the N terminal of human TMEM107. Synthetic peptide located within the following region: VVITLFWSRDSNIQACPLTFTPEEYDKQDIHPLPLCRLVAALSVTLGLF
Formulation:	Liquid. Purified antibody supplied in 1x PBS buffer with 0.09% (w/v) sodium azide and 2% sucrose.
Concentration:	lot specific
Purification:	Affinity Purified
Conjugation:	Unconjugated
Storage:	Store at -20°C as received.
Stability:	Stable for 12 months from date of receipt.
Predicted Protein Size:	16 kDa
Gene Name:	transmembrane protein 107
Database Link:	NP_115730 Entrez Gene 84314 Human Q6UX40
Background:	The function of TMEM107 remains unknown.
Synonyms:	GRVS638; PRO1268
Note:	Immunogen Sequence Homology: Human: 100%; Dog: 86%; Pig: 86%; Horse: 86%; Guinea pig: 86%; Rat: 83%; Mouse: 83%; Bovine: 79%
Protein Families:	Transmembrane



[View online »](#)

Product images:



WB Suggested Anti-TMEM107 Antibody Titration:
0.2-1 ug/ml; ELISA Titer: 1: 1562500; Positive
Control: THP-1 cell lysate