

Product datasheet for **TA339609**

ZDHHC16 Rabbit Polyclonal Antibody

Product data:

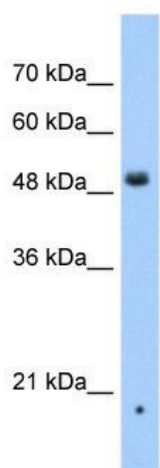
Product Type:	Primary Antibodies
Applications:	WB
Recommended Dilution:	WB
Reactivity:	Human
Host:	Rabbit
Isotype:	IgG
Clonality:	Polyclonal
Immunogen:	The immunogen for anti-ZDHHC16 antibody: synthetic peptide directed towards the N terminal of human ZDHHC16. Synthetic peptide located within the following region: SVPRLCWHFFYSHWNLILIVFHYQAITPPGYPPQGRNDIATVSICKKC
Formulation:	Liquid. Purified antibody supplied in 1x PBS buffer with 0.09% (w/v) sodium azide and 2% sucrose. <i>Note that this product is shipped as lyophilized powder to China customers.</i>
Concentration:	lot specific
Purification:	Affinity Purified
Conjugation:	Unconjugated
Storage:	Store at -20°C as received.
Stability:	Stable for 12 months from date of receipt.
Predicted Protein Size:	44 kDa
Gene Name:	zinc finger DHHC-type containing 16
Database Link:	NP_115703 Entrez Gene 84287 Human Q969W1
Background:	ZDHHC16 may be involved in apoptosis regulation.
Synonyms:	APH2; DHHC-16
Note:	Immunogen Sequence Homology: Dog: 100%; Pig: 100%; Rat: 100%; Goat: 100%; Human: 100%; Mouse: 100%; Bovine: 100%; Rabbit: 100%; Guinea pig: 100%; Horse: 86%



[View online »](#)

Protein Families: Transmembrane

Product images:



WB Suggested Anti-ZDHHC16 Antibody Titration:
0.2-1 ug/ml; Positive Control: Jurkat cell lysate