

Product datasheet for **TA339607**

Synaptotagmin 3 (SYT3) Rabbit Polyclonal Antibody

Product data:

Product Type:	Primary Antibodies
Applications:	WB
Recommended Dilution:	WB
Reactivity:	Rat, Mouse, Human
Host:	Rabbit
Isotype:	IgG
Clonality:	Polyclonal
Immunogen:	The immunogen for anti-SYT3 antibody: synthetic peptide directed towards the N terminal of human SYT3. Synthetic peptide located within the following region: VSWKLCWVPWRDKGGSAVGGGPLRKDLGPGVGLAGLVGGGGHHLAAGLGG
Formulation:	Liquid. Purified antibody supplied in 1x PBS buffer with 0.09% (w/v) sodium azide and 2% sucrose. <i>Note that this product is shipped as lyophilized powder to China customers.</i>
Concentration:	lot specific
Purification:	Affinity Purified
Conjugation:	Unconjugated
Storage:	Store at -20°C as received.
Stability:	Stable for 12 months from date of receipt.
Predicted Protein Size:	63 kDa
Gene Name:	synaptotagmin 3
Database Link:	NP_115674 Entrez Gene 20981 Mouse Entrez Gene 25731 Rat Entrez Gene 84258 Human Q9BQG1
Background:	SYT3 may be involved in Ca(2+)-dependent exocytosis of secretory vesicles through Ca(2+) and phospholipid binding to the C2 domain or may serve as Ca(2+) sensors in the process of vesicular trafficking and exocytosis.
Synonyms:	SytIII

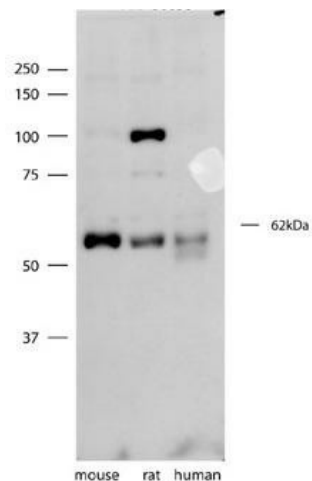


[View online »](#)

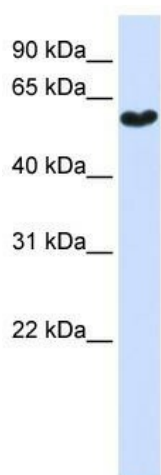
Note: Immunogen Sequence Homology: Dog: 100%; Pig: 100%; Rat: 100%; Horse: 100%; Human: 100%; Mouse: 100%; Guinea pig: 100%; Bovine: 93%

Protein Families: Secreted Protein, Transmembrane

Product images:



SYT3 antibody - N-terminal region validated by WB using mouse, rat, and human brain lysates at 1 ug/ml.



WB Suggested Anti-SYT3 Antibody Titration: 0.2-1 ug/ml; ELISA Titer: 1: 62500; Positive Control: 293T cell lysate