

Product datasheet for **TA339606**

TMEM117 Rabbit Polyclonal Antibody

Product data:

Product Type:	Primary Antibodies
Applications:	WB
Recommended Dilution:	WB
Reactivity:	Human
Host:	Rabbit
Isotype:	IgG
Clonality:	Polyclonal
Immunogen:	The immunogen for anti-TMEM117 antibody: synthetic peptide directed towards the middle region of human TMEM117. Synthetic peptide located within the following region: GQYIGPGQKIYTVKDSSESLKDLNRTKLSWEWRSNHTNPRTNKTYVEGDMF
Formulation:	Liquid. Purified antibody supplied in 1x PBS buffer with 0.09% (w/v) sodium azide and 2% sucrose. <i>Note that this product is shipped as lyophilized powder to China customers.</i>
Concentration:	lot specific
Purification:	Affinity Purified
Conjugation:	Unconjugated
Storage:	Store at -20°C as received.
Stability:	Stable for 12 months from date of receipt.
Predicted Protein Size:	45 kDa
Gene Name:	transmembrane protein 117
Database Link:	NP_115632 Entrez Gene 84216 Human Q9H0C3
Background:	TMEM117 is a multi-pass membrane protein. It belongs to the TMEM117 family. The exact function of TMEM117 remains unknown.
Synonyms:	DKFZp434K2435

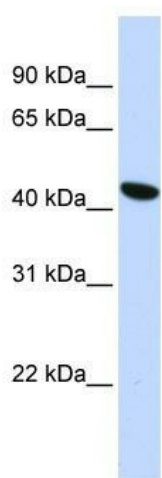


[View online »](#)

Note: Immunogen Sequence Homology: Dog: 100%; Pig: 100%; Rat: 100%; Horse: 100%; Human: 100%; Mouse: 100%; Bovine: 100%; Rabbit: 100%; Guinea pig: 100%

Protein Families: Transmembrane

Product images:



WB Suggested Anti-TMEM117 Antibody Titration:
0.2-1 ug/ml; ELISA Titer: 1: 62500; Positive
Control: HepG2 cell lysate