

Product datasheet for **TA339605**

SGK196 (POMK) Rabbit Polyclonal Antibody

Product data:

Product Type:	Primary Antibodies
Applications:	WB
Recommended Dilution:	WB
Reactivity:	Human, Mouse
Host:	Rabbit
Isotype:	IgG
Clonality:	Polyclonal
Immunogen:	The immunogen for anti-FLJ23356 antibody: synthetic peptide directed towards the N terminal of human FLJ23356. Synthetic peptide located within the following region: CEELRTEVRQLKRVGEGAVKRVFLSEWKEHKVALSQLTSLEMKDDFLHGL
Formulation:	Liquid. Purified antibody supplied in 1x PBS buffer with 0.09% (w/v) sodium azide and 2% sucrose. <i>Note that this product is shipped as lyophilized powder to China customers.</i>
Concentration:	lot specific
Purification:	Affinity Purified
Conjugation:	Unconjugated
Storage:	Store at -20°C as received.
Stability:	Stable for 12 months from date of receipt.
Predicted Protein Size:	40 kDa
Gene Name:	protein-O-mannose kinase
Database Link:	NP_115613 Entrez Gene 74653 Mouse Entrez Gene 84197 Human Q9H5K3
Background:	The exact function of SGK196 remains unknown.
Synonyms:	MDDGA12; MDDGC12; SGK196
Note:	Immunogen Sequence Homology: Human: 100%; Mouse: 100%; Rabbit: 100%; Pig: 93%; Rat: 93%; Bovine: 93%; Guinea pig: 93%; Dog: 86%

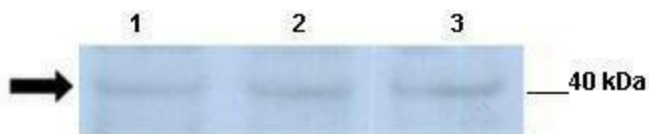


[View online »](#)

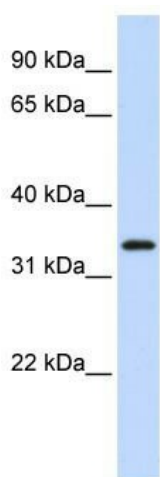
Protein Families: Druggable Genome, Protein Kinase, Transmembrane

Product images:

FLJ23356



Lanes: Lane 1: 30ug mouse renal epithelial lysate; Lane 2: 30ug mouse renal epithelial lysate; Lane 3: 30ug mouse renal epithelial lysate; Primary Antibody Dilution: 1: 500; Secondary Antibody: Anti-rabbit-HRP; Secondary Antibody Dilution: 1: 2500; Gene N



WB Suggested Anti-SGK196 Antibody Titration: 0.2-1 ug/ml; ELISA Titer: 1: 312500; Positive Control: 721_B cell lysate