

Product datasheet for **TA339604**

SLITRK6 Rabbit Polyclonal Antibody

Product data:

Product Type:	Primary Antibodies
Applications:	WB
Recommended Dilution:	WB
Reactivity:	Human
Host:	Rabbit
Isotype:	IgG
Clonality:	Polyclonal
Immunogen:	The immunogen for anti-SLITRK6 antibody: synthetic peptide directed towards the N terminal of human SLITRK6. Synthetic peptide located within the following region: NFITVIEPSAFSKLNRLKVLILNDNAIESLPPNIFRFVPLTHLDRGNQL
Formulation:	Liquid. Purified antibody supplied in 1x PBS buffer with 0.09% (w/v) sodium azide and 2% sucrose. <i>Note that this product is shipped as lyophilized powder to China customers.</i>
Concentration:	lot specific
Purification:	Affinity Purified
Conjugation:	Unconjugated
Storage:	Store at -20°C as received.
Stability:	Stable for 12 months from date of receipt.
Predicted Protein Size:	95 kDa
Gene Name:	SLIT and NTRK like family member 6
Database Link:	NP_115605 Entrez Gene 84189 Human Q9H5Y7



[View online »](#)

Background:

Members of the SLITRK family, such as SLITRK6, are integral membrane proteins with 2 N-terminal leucine-rich repeat (LRR) domains similar to those of SLIT proteins. Most SLITRKs, including SLITRK6, also have C-terminal regions that share homology with neurotrophin receptors. SLITRKs are expressed predominantly in neural tissues and have neurite-modulating activity. Members of the SLITRK family, such as SLITRK6, are integral membrane proteins with 2 N-terminal leucine-rich repeat (LRR) domains similar to those of SLIT proteins (see SLIT1; MIM 603742). Most SLITRKs, including SLITRK6, also have C-terminal regions that share homology with neurotrophin receptors (see NTRK1; MIM 191315). SLITRKs are expressed predominantly in neural tissues and have neurite-modulating activity (Aruga et al., 2003 [PubMed 14557068]). [supplied by OMIM]

Synonyms:

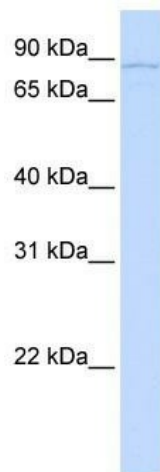
DFNMYP

Note:

Immunogen Sequence Homology: Dog: 100%; Rat: 100%; Horse: 100%; Human: 100%; Mouse: 100%; Bovine: 100%; Pig: 93%; Zebrafish: 79%

Protein Families:

Druggable Genome, Transmembrane

Product images:

WB Suggested Anti-SLITRK6 Antibody Titration:
0.2-1 ug/ml; ELISA Titer: 1: 62500; Positive
Control: 721_B cell lysate