

Product datasheet for **TA339603**

MLSTD2 (FAR1) Rabbit Polyclonal Antibody

Product data:

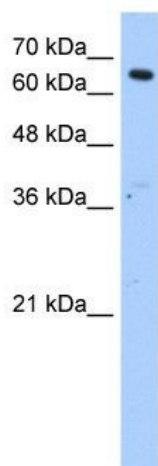
Product Type:	Primary Antibodies
Applications:	WB
Recommended Dilution:	WB
Reactivity:	Human
Host:	Rabbit
Isotype:	IgG
Clonality:	Polyclonal
Immunogen:	The immunogen for anti-MLSTD2 antibody: synthetic peptide directed towards the N terminal of human MLSTD2. Synthetic peptide located within the following region: LRSCPKNVSVYVLVRQKAGQTPQERVEEVLGKLFDRLRDENPDFREKII
Formulation:	Liquid. Purified antibody supplied in 1x PBS buffer with 0.09% (w/v) sodium azide and 2% sucrose.
Concentration:	lot specific
Purification:	Protein A purified
Conjugation:	Unconjugated
Storage:	Store at -20°C as received.
Stability:	Stable for 12 months from date of receipt.
Predicted Protein Size:	59 kDa
Gene Name:	fatty acyl-CoA reductase 1
Database Link:	NP_115604 Entrez Gene 84188 Human Q8WVX9
Background:	FAR1 catalyzes the reduction of saturated fatty acyl-CoA with chain length C16 or C18 to fatty alcohols.
Synonyms:	MLSTD2; PFCRD; SDR10E1
Note:	Immunogen Sequence Homology: Dog: 100%; Rat: 100%; Horse: 100%; Human: 100%; Mouse: 100%; Bovine: 100%; Rabbit: 100%; Pig: 93%; Guinea pig: 93%



[View online »](#)

Protein Families: Transmembrane

Product images:



WB Suggested Anti-FAR1 Antibody Titration: 1.25 ug/ml; Positive Control: HepG2 cell lysate