

Product datasheet for **TA339598**

C16orf9 (FAM234A) Rabbit Polyclonal Antibody

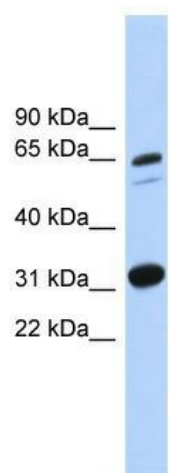
Product data:

Product Type:	Primary Antibodies
Applications:	WB
Recommended Dilution:	WB
Reactivity:	Human
Host:	Rabbit
Isotype:	IgG
Clonality:	Polyclonal
Immunogen:	The immunogen for anti-ITFG3 antibody: synthetic peptide directed towards the middle region of human ITFG3. Synthetic peptide located within the following region: RSAFFFWGLHELGSTSETETGEARHSLYMFHPTLPRVLELANVSTHIVA
Formulation:	Liquid. Purified antibody supplied in 1x PBS buffer with 0.09% (w/v) sodium azide and 2% sucrose. <i>Note that this product is shipped as lyophilized powder to China customers.</i>
Concentration:	lot specific
Purification:	Protein A purified
Conjugation:	Unconjugated
Storage:	Store at -20°C as received.
Stability:	Stable for 12 months from date of receipt.
Predicted Protein Size:	60 kDa
Gene Name:	family with sequence similarity 234 member A
Database Link:	NP_114428 Entrez Gene 83986 Human Q9H0X4
Background:	The function of this protein remains unknown.
Synonyms:	C16orf9; gs19; ITFG3
Note:	Immunogen Sequence Homology: Human: 100%
Protein Families:	Transmembrane



[View online »](#)

Product images:



WB Suggested Anti-ITFG3 Antibody Titration: 0.2-1 ug/ml; ELISA Titer: 1: 62500; Positive Control: MCF7 cell lysate