

## Product datasheet for TA339597

### SPNS1 Rabbit Polyclonal Antibody

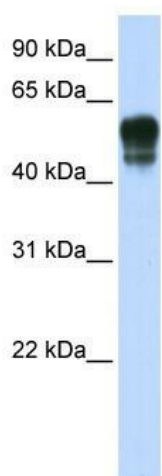
#### Product data:

Product Type:	Primary Antibodies
Applications:	WB
Recommended Dilution:	WB
Reactivity:	Human
Host:	Rabbit
Isotype:	IgG
Clonality:	Polyclonal
Immunogen:	The immunogen for anti-SPNS1 antibody: synthetic peptide directed towards the N terminal of human SPNS1. Synthetic peptide located within the following region: AGSDTAPFLSQADDPDDGPVPGTGPLPGSTGNPKSEEPEVPDQEGLQRIT
Formulation:	Liquid. Purified antibody supplied in 1x PBS buffer with 0.09% (w/v) sodium azide and 2% sucrose.
Concentration:	lot specific
Purification:	Protein A purified
Conjugation:	Unconjugated
Storage:	Store at -20°C as received.
Stability:	Stable for 12 months from date of receipt.
Predicted Protein Size:	56 kDa
Gene Name:	sphingolipid transporter 1 (putative)
Database Link:	<a href="#">NP_114427</a> <a href="#">Entrez Gene 83985 Human</a> <a href="#">Q9H2V7</a>
Background:	SPNS1 is the Sphingolipid transporter. It may be involved in necrotic or autophagic cell death. It belongs to the major facilitator superfamily, spinster family.
Synonyms:	HSpin1; LAT; nrs; PP2030; SPIN1; SPINL
Note:	Immunogen Sequence Homology: Pig: 100%; Rat: 100%; Human: 100%; Mouse: 100%; Rabbit: 100%; Guinea pig: 100%; Bovine: 92%; Dog: 91%


[View online »](#)

Protein Families: Transmembrane

### Product images:



WB Suggested Anti-SPNS1 Antibody Titration: 0.2-1 ug/ml; ELISA Titer: 1: 12500; Positive Control: Transfected 293T