

## Product datasheet for **TA339595**

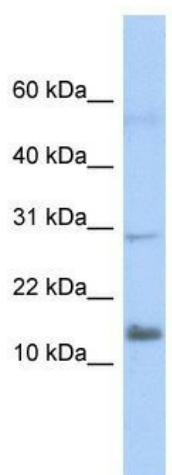
### IFI27L2 Rabbit Polyclonal Antibody

#### Product data:

Product Type:	Primary Antibodies
Applications:	WB
Recommended Dilution:	WB
Reactivity:	Human
Host:	Rabbit
Isotype:	IgG
Clonality:	Polyclonal
Immunogen:	The immunogen for anti-FAM14A antibody: synthetic peptide directed towards the middle region of human FAM14A. Synthetic peptide located within the following region: LSTSSNILLASVGSVLGACLGNSPSSSLPAEPEAKEDEARENVPQGEPPK
Formulation:	Liquid. Purified antibody supplied in 1x PBS buffer with 0.09% (w/v) sodium azide and 2% sucrose.
Concentration:	lot specific
Purification:	Protein A purified
Conjugation:	Unconjugated
Storage:	Store at -20°C as received.
Stability:	Stable for 12 months from date of receipt.
Predicted Protein Size:	12 kDa
Gene Name:	interferon alpha inducible protein 27 like 2
Database Link:	<a href="#">NP_114425</a> <a href="#">Entrez Gene 83982 Human</a> <a href="#">Q9H2X8</a>
Background:	FRK belongs to the TYR family of protein kinases. This tyrosine kinase is a nuclear protein and may function during G1 and S phase of the cell cycle and suppress growth.
Synonyms:	FAM14A; ISG12B; TLH29
Note:	Immunogen Sequence Homology: Human: 100%
Protein Families:	Transmembrane



[View online »](#)

**Product images:**

WB Suggested Anti-IFI27L2 Antibody Titration:  
0.2-1 ug/ml; ELISA Titer: 1: 62500; Positive  
Control: Transfected 293T