

Product datasheet for **TA339593**

SPATA9 Rabbit Polyclonal Antibody

Product data:

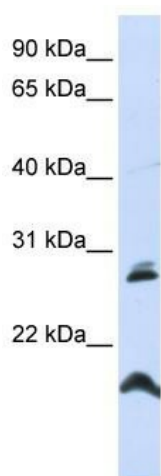
Product Type:	Primary Antibodies
Applications:	WB
Recommended Dilution:	WB
Reactivity:	Human
Host:	Rabbit
Isotype:	IgG
Clonality:	Polyclonal
Immunogen:	The immunogen for anti-SPATA9 antibody: synthetic peptide directed towards the N terminal of human SPATA9. Synthetic peptide located within the following region: PIKPVGWICGQVLKNFSGRIEIQKAIMDLVDEFKDEFPTILRLSQQSNQK
Formulation:	Liquid. Purified antibody supplied in 1x PBS buffer with 0.09% (w/v) sodium azide and 2% sucrose.
Concentration:	lot specific
Purification:	Protein A purified
Conjugation:	Unconjugated
Storage:	Store at -20°C as received.
Stability:	Stable for 12 months from date of receipt.
Predicted Protein Size:	29 kDa
Gene Name:	spermatogenesis associated 9
Database Link:	NP_114158 Entrez Gene 83890 Human Q9BWW2
Background:	SPATA9 may play a role in testicular development/spermatogenesis and may be an important factor in male infertility. Defects in expression of SPATA9 lead to Sertoli-cell-only syndrome.
Synonyms:	NYD-SP16
Note:	Immunogen Sequence Homology: Dog: 100%; Pig: 100%; Rat: 100%; Horse: 100%; Human: 100%; Bovine: 100%; Guinea pig: 100%; Rabbit: 92%; Mouse: 85%



[View online »](#)

Protein Families: Transmembrane

Product images:



WB Suggested Anti-SPATA9 Antibody Titration:
0.2-1 ug/ml; ELISA Titer: 1: 312500; Positive
Control: HepG2 cell lysate