

Product datasheet for **TA339592**

TSPAN10 Rabbit Polyclonal Antibody

Product data:

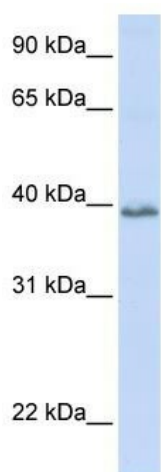
Product Type:	Primary Antibodies
Applications:	WB
Recommended Dilution:	WB
Reactivity:	Human
Host:	Rabbit
Isotype:	IgG
Clonality:	Polyclonal
Immunogen:	The immunogen for anti-TSPAN10 antibody: synthetic peptide directed towards the N terminal of human TSPAN10. Synthetic peptide located within the following region: SCVKYLIFLSNFPFSLGLLALAIGLWGLAVKGSGLGSDLGGLPADPMLG
Formulation:	Liquid. Purified antibody supplied in 1x PBS buffer with 0.09% (w/v) sodium azide and 2% sucrose. <i>Note that this product is shipped as lyophilized powder to China customers.</i>
Concentration:	lot specific
Purification:	Protein A purified
Conjugation:	Unconjugated
Storage:	Store at -20°C as received.
Stability:	Stable for 12 months from date of receipt.
Predicted Protein Size:	37 kDa
Gene Name:	tetraspanin 10
Database Link:	NP_114151 Entrez Gene 83882 Human Q9H1Z9
Background:	TSPAN10 belongs to the tetraspanin (TM4SF) family. It is a multi-pass membrane protein. The exact function of TSPAN10 remains unknown.
Synonyms:	OCSP
Note:	Immunogen Sequence Homology: Human: 100%



[View online »](#)

Protein Families: Transmembrane

Product images:



WB Suggested Anti-TSPAN10 Antibody Titration:
0.2-1 ug/ml; ELISA Titer: 1: 1562500; Positive
Control: Human heart