

## Product datasheet for **TA339588**

### **FTHL17 Rabbit Polyclonal Antibody**

#### **Product data:**

<b>Product Type:</b>	Primary Antibodies
<b>Applications:</b>	WB
<b>Recommended Dilution:</b>	WB
<b>Reactivity:</b>	Human
<b>Host:</b>	Rabbit
<b>Isotype:</b>	IgG
<b>Clonality:</b>	Polyclonal
<b>Immunogen:</b>	The immunogen for anti-FTHL17 antibody: synthetic peptide directed towards the N terminal of human FTHL17. Synthetic peptide located within the following region: MAFYFNRDDVALENFFRYFLRLSDDKMEHAQKLMRLQNLRRGGHICLHDIR
<b>Formulation:</b>	Liquid. Purified antibody supplied in 1x PBS buffer with 0.09% (w/v) sodium azide and 2% sucrose. <i>Note that this product is shipped as lyophilized powder to China customers.</i>
<b>Concentration:</b>	lot specific
<b>Purification:</b>	Protein A purified
<b>Conjugation:</b>	Unconjugated
<b>Storage:</b>	Store at -20°C as received.
<b>Stability:</b>	Stable for 12 months from date of receipt.
<b>Predicted Protein Size:</b>	21 kDa
<b>Gene Name:</b>	ferritin heavy chain like 17
<b>Database Link:</b>	<a href="#">NP_114100</a> <a href="#">Entrez Gene 53940 Human Q9BXU8</a>
<b>Background:</b>	This gene is similar to a mouse gene that encodes a ferritin heavy polypeptide-like protein. This gene is similar to a mouse gene that encodes a ferritin heavy polypeptide-like protein.
<b>Synonyms:</b>	CT38

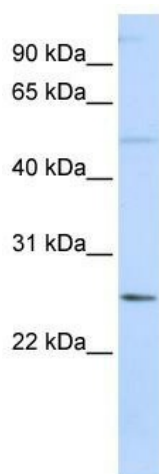


[View online »](#)

Note: Immunogen Sequence Homology: Human: 100%

Protein Families: Transmembrane

### Product images:



WB Suggested Anti-FTHL17 Antibody Titration:  
0.2-1 ug/ml; ELISA Titer: 1: 312500; Positive  
Control: 721\_B cell lysate