

Product datasheet for **TA339585**

PCDHA3 Rabbit Polyclonal Antibody

Product data:

Product Type:	Primary Antibodies
Applications:	WB
Recommended Dilution:	WB
Reactivity:	Human
Host:	Rabbit
Isotype:	IgG
Clonality:	Polyclonal
Immunogen:	The immunogen for Anti-PCDHA3 antibody is: synthetic peptide directed towards the middle region of Human PCDHA3. Synthetic peptide located within the following region: ATATVLVSLVESGQAPKASSQASAGATGPEAALVDVNVYLIVAICAVSSL
Formulation:	Liquid. Purified antibody supplied in 1x PBS buffer with 0.09% (w/v) sodium azide and 2% sucrose. <i>Note that this product is shipped as lyophilized powder to China customers.</i>
Concentration:	lot specific
Purification:	Protein A purified
Conjugation:	Unconjugated
Storage:	Store at -20°C as received.
Stability:	Stable for 12 months from date of receipt.
Predicted Protein Size:	104 kDa
Gene Name:	protocadherin alpha 3
Database Link:	NP_061729 Entrez Gene 56145 Human Q9Y5H8
Background:	PCDHA3 is a potential calcium-dependent cell-adhesion protein. It may be involved in the establishment and maintenance of specific neuronal connections in the brain.
Synonyms:	PCDH-ALPHA3

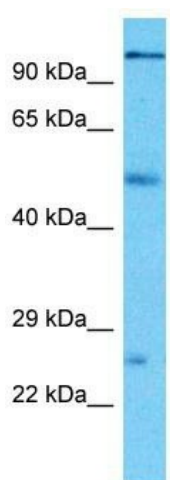


[View online »](#)

Note: Immunogen Sequence Homology: Pig: 100%; Rat: 100%; Horse: 100%; Human: 100%; Guinea pig: 100%; Mouse: 92%; Dog: 85%; Bovine: 85%

Protein Families: Transmembrane

Product images:



Host: Rabbit
Target Name: PCDHA3
Sample Tissue: Thymus Tumor Lysate
Antibody Dilution: 1.0 μ g/ml

Host: Rabbit; Target Name: PCDHA3; Sample Tissue: Thymus Tumor lysates; Antibody Dilution: 1.0 ug/ml