

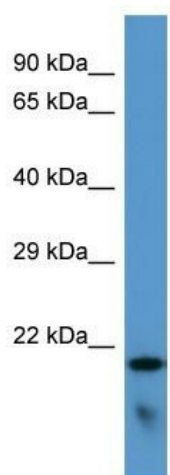
## Product datasheet for **TA339582**

### TLCD3B Rabbit Polyclonal Antibody

#### Product data:

Product Type:	Primary Antibodies
Applications:	WB
Recommended Dilution:	WB
Reactivity:	Human
Host:	Rabbit
Isotype:	IgG
Clonality:	Polyclonal
Immunogen:	The immunogen for Anti-FAM57B antibody is: synthetic peptide directed towards the C-terminal region of Human FAM57B. Synthetic peptide located within the following region: WAYGRHAGLPLLAVPLAIPAHVNLGAALLAPQLYWFFLICRGACRLFWP
Formulation:	Liquid. Purified antibody supplied in 1x PBS buffer with 0.09% (w/v) sodium azide and 2% sucrose.
Concentration:	lot specific
Purification:	Protein A purified
Conjugation:	Unconjugated
Storage:	Store at -20°C as received.
Stability:	Stable for 12 months from date of receipt.
Predicted Protein Size:	24 kDa
Gene Name:	family with sequence similarity 57 member B
Database Link:	<a href="#">NP_113666</a> <a href="#">Entrez Gene 83723 Human</a> <a href="#">Q71RH2</a>
Background:	FAM57B is involved in ceramide synthesis.
Synonyms:	FP1188
Note:	Immunogen Sequence Homology: Pig: 100%; Rat: 100%; Human: 100%; Bovine: 100%; Guinea pig: 100%; Horse: 93%; Mouse: 86%
Protein Families:	Transmembrane


[View online »](#)

**Product images:**


Host: Rabbit

Target Name: FAM57B

Sample Tissue: HeLa Cell Lysate

Antibody Dilution: 1.0 µg/ml

Host: Rabbit; Target Name: FAM57B; Sample Tissue: HeLa Whole cell lysates; Antibody Dilution: 1.0 ug/ml