

Product datasheet for **TA339581**

CRISPLD2 Rabbit Polyclonal Antibody

Product data:

Product Type:	Primary Antibodies
Applications:	WB
Recommended Dilution:	WB
Reactivity:	Human, Mouse
Host:	Rabbit
Isotype:	IgG
Clonality:	Polyclonal
Immunogen:	The immunogen for anti-CRISPLD2 antibody: synthetic peptide directed towards the N terminal of human CRISPLD2. Synthetic peptide located within the following region: MSCVLGGVIPLGLLFLVCGSQGYLLPNVTLLLEELLSKYQHNEHSRVRRA
Formulation:	Liquid. Purified antibody supplied in 1x PBS buffer with 0.09% (w/v) sodium azide and 2% sucrose. <i>Note that this product is shipped as lyophilized powder to China customers.</i>
Concentration:	lot specific
Purification:	Protein A purified
Conjugation:	Unconjugated
Storage:	Store at -20°C as received.
Stability:	Stable for 12 months from date of receipt.
Predicted Protein Size:	56 kDa
Gene Name:	cysteine rich secretory protein LCCL domain containing 2
Database Link:	NP_113664 Entrez Gene 78892 Mouse Entrez Gene 83716 Human Q9H0B8
Background:	CRISPLD2 is a novel NSCLP candidate gene.
Synonyms:	CRISP11; LCRISP2
Note:	Immunogen Sequence Homology: Human: 100%; Rat: 86%; Mouse: 86%
Protein Families:	Secreted Protein, Transmembrane

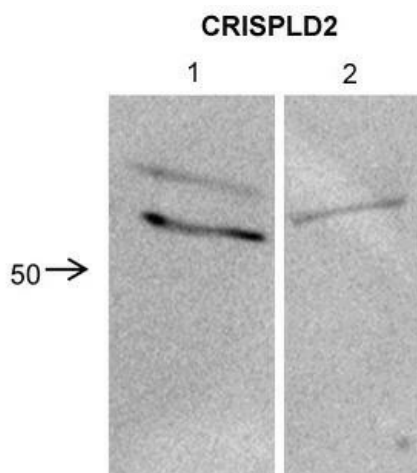


[View online »](#)

Product images:

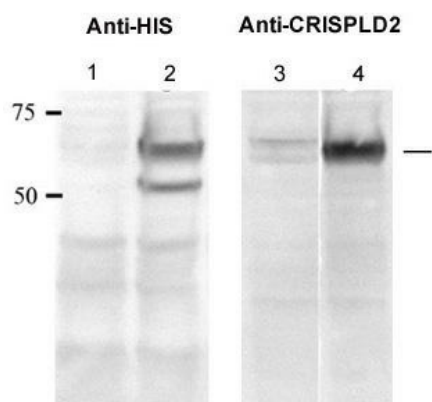


WB Suggested Anti-CRISPLD2 Antibody Titration: 0.2-1 ug/ml; Positive Control: Jurkat cell lysate



Sample Type: 1. Human Lung Fibroblast cells (40ug); 2. Mouse lung cells (40ug); Primary dilution: 1: 2000; Secondary Antibody: Anti-rabbit IgG horseradish peroxidase; Secondary dilution: 1: 1000; Image Submitted by: Xinlei Chen; McGill University

CRISPLD2



CRISPLD2 antibody - N-terminal region validated by WB using human and mouse serum, human fetal lung cell culture at 0.5 ug/ml.