

## Product datasheet for **TA339580**

### Anoctamin 3 (ANO3) Rabbit Polyclonal Antibody

#### Product data:

Product Type:	Primary Antibodies
Applications:	WB
Recommended Dilution:	WB
Reactivity:	Human
Host:	Rabbit
Isotype:	IgG
Clonality:	Polyclonal
Immunogen:	The immunogen for anti-TMEM16C antibody: synthetic peptide directed towards the C terminal of human TMEM16C. Synthetic peptide located within the following region: AFVIAITSDYIPRFVYKEYKGPCANHVPESENCLKGYVNNLSLFFDLSEL
Formulation:	Liquid. Purified antibody supplied in 1x PBS buffer with 0.09% (w/v) sodium azide and 2% sucrose. <i>Note that this product is shipped as lyophilized powder to China customers.</i>
Concentration:	lot specific
Purification:	Protein A purified
Conjugation:	Unconjugated
Storage:	Store at -20°C as received.
Stability:	Stable for 12 months from date of receipt.
Predicted Protein Size:	115 kDa
Gene Name:	anoctamin 3
Database Link:	<a href="#">NP_113606</a> <a href="#">Entrez Gene 63982 Human Q9BYT9</a>
Background:	ANO3 is a multi-pass membrane proteinPotential. It belongs to the anoctamin family. ANO3 may act as a calcium-activated chloride channel.
Synonyms:	C11orf25; DYT23; DYT24; GENX-3947; TMEM16C

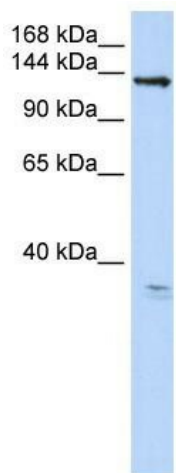


[View online »](#)

**Note:** Immunogen Sequence Homology: Dog: 100%; Pig: 100%; Rat: 100%; Horse: 100%; Human: 100%; Mouse: 100%; Bovine: 100%; Rabbit: 100%; Guinea pig: 100%

**Protein Families:** Transmembrane

**Product images:**



WB Suggested Anti-ANO3 Antibody Titration: 0.2-1 ug/ml; ELISA Titer: 1: 312500; Positive Control: 293T cell lysate