

## Product datasheet for **TA339578**

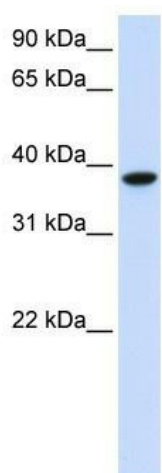
### GLT8D2 Rabbit Polyclonal Antibody

#### Product data:

Product Type:	Primary Antibodies
Applications:	WB
Recommended Dilution:	WB
Reactivity:	Human
Host:	Rabbit
Isotype:	IgG
Clonality:	Polyclonal
Immunogen:	The immunogen for anti-GLT8D2 antibody: synthetic peptide directed towards the C terminal of human GLT8D2. Synthetic peptide located within the following region: IRHLGWNPDARYSEHFLQEAKLLHWNGRHKPWDFPSVHNDLWESWFVPDP
Formulation:	Liquid. Purified antibody supplied in 1x PBS buffer with 0.09% (w/v) sodium azide and 2% sucrose.
Concentration:	lot specific
Purification:	Protein A purified
Conjugation:	Unconjugated
Storage:	Store at -20°C as received.
Stability:	Stable for 12 months from date of receipt.
Predicted Protein Size:	40 kDa
Gene Name:	glycosyltransferase 8 domain containing 2
Database Link:	<a href="#">NP_112592</a> <a href="#">Entrez Gene 83468 Human</a> <a href="#">Q9H1C3</a>
Background:	GLT8D2 belongs to the glycosyltransferase 8 family. The exact function of it remains unknown
Synonyms:	FLJ31494
Note:	Immunogen Sequence Homology: Rat: 100%; Human: 100%; Mouse: 100%; Rabbit: 100%; Dog: 93%; Pig: 93%; Horse: 93%; Bovine: 93%; Guinea pig: 77%
Protein Families:	Transmembrane



[View online »](#)

**Product images:**

WB Suggested Anti-GLT8D2 Antibody Titration:  
0.2-1 ug/ml; ELISA Titer: 1: 312500; Positive  
Control: Human Muscle