

Product datasheet for **TA339575**

SFXN3 Rabbit Polyclonal Antibody

Product data:

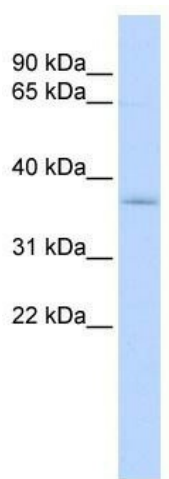
Product Type:	Primary Antibodies
Applications:	WB
Recommended Dilution:	WB
Reactivity:	Human
Host:	Rabbit
Isotype:	IgG
Clonality:	Polyclonal
Immunogen:	The immunogen for anti-SFXN3 antibody: synthetic peptide directed towards the middle region of human SFXN3. Synthetic peptide located within the following region: TPITVRQLGTAYVSATTGAVATALGLKSLTKHLPLVGRFVPFAAVAAAN
Formulation:	Liquid. Purified antibody supplied in 1x PBS buffer with 0.09% (w/v) sodium azide and 2% sucrose. <i>Note that this product is shipped as lyophilized powder to China customers.</i>
Concentration:	lot specific
Purification:	Protein A purified
Conjugation:	Unconjugated
Storage:	Store at -20°C as received.
Stability:	Stable for 12 months from date of receipt.
Predicted Protein Size:	36 kDa
Gene Name:	sideroflexin 3
Database Link:	NP_112233 Entrez Gene 81855 Human Q9BWM7
Background:	SFXN3 is a potential iron transporter.
Synonyms:	BA108L7.2; SFX3
Note:	Immunogen Sequence Homology: Dog: 100%; Rat: 100%; Human: 100%; Mouse: 100%; Bovine: 100%; Rabbit: 100%; Pig: 93%; Horse: 93%; Guinea pig: 93%



[View online »](#)

Protein Families: Transmembrane

Product images:



WB Suggested Anti-SFXN3 Antibody Titration: 0.2-1 ug/ml; ELISA Titer: 1: 1562500; Positive Control: CCRF-CEM cell lysate