

## Product datasheet for **TA339572**

### SPACA1 Rabbit Polyclonal Antibody

#### Product data:

Product Type:	Primary Antibodies
Applications:	WB
Recommended Dilution:	WB
Reactivity:	Human
Host:	Rabbit
Isotype:	IgG
Clonality:	Polyclonal
Immunogen:	The immunogen for anti-SPACA1 antibody: synthetic peptide directed towards the N terminal of human SPACA1. Synthetic peptide located within the following region: TENNDSETAENYAPPETEDVSNRNWKEVEFGMCTVTCGIGVREVILTNG
Formulation:	Liquid. Purified antibody supplied in 1x PBS buffer with 0.09% (w/v) sodium azide and 2% sucrose. <i>Note that this product is shipped as lyophilized powder to China customers.</i>
Concentration:	lot specific
Purification:	Protein A purified
Conjugation:	Unconjugated
Storage:	Store at -20°C as received.
Stability:	Stable for 12 months from date of receipt.
Predicted Protein Size:	32 kDa
Gene Name:	sperm acrosome associated 1
Database Link:	<a href="#">NP_112222</a> <a href="#">Entrez Gene 81833 Human</a> <a href="#">Q9HBV2</a>



[View online »](#)

**Background:**

The correlation of anti-sperm antibodies with cases of unexplained infertility implicates a role for these antibodies in blocking fertilization. Improved diagnosis and treatment of immunologic infertility, as well as identification of proteins for targeted contraception, are dependent on the identification and characterization of relevant sperm antigens. The protein expressed by this gene is recognized by anti-sperm antibodies from infertile males. Furthermore, antibodies generated against the recombinant protein block in vitro fertilization. This protein localizes to the acrosomal membrane of spermatids and mature spermatozoa where it is thought to play a role in acrosomal morphogenesis and in sperm-egg binding and fusion, respectively.

**Synonyms:**

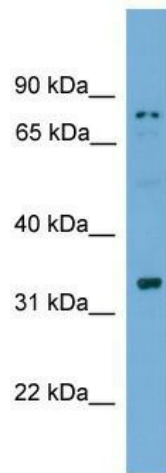
SAMP32

**Note:**

Immunogen Sequence Homology: Human: 100%

**Protein Families:**

Transmembrane

**Product images:**

WB Suggested Anti-SPACA1 Antibody Titration:  
0.2-1 ug/ml; ELISA Titer: 1: 312500; Positive  
Control: NCI-H226 cell lysate SPACA1 is supported  
by BioGPS gene expression data to be expressed  
in NCIH226