

## Product datasheet for **TA339571**

### AMN Rabbit Polyclonal Antibody

#### Product data:

Product Type:	Primary Antibodies
Applications:	WB
Recommended Dilution:	WB
Reactivity:	Human
Host:	Rabbit
Isotype:	IgG
Clonality:	Polyclonal
Immunogen:	The immunogen for anti-AMN antibody: synthetic peptide directed towards the N terminal of human AMN. Synthetic peptide located within the following region: NWSQNRTPCAGGAVEFPADKMVSVLVQEGHAVSDMLLPLDGELVLASGAG
Formulation:	Liquid. Purified antibody supplied in 1x PBS buffer with 0.09% (w/v) sodium azide and 2% sucrose. <i>Note that this product is shipped as lyophilized powder to China customers.</i>
Concentration:	lot specific
Purification:	Protein A purified
Conjugation:	Unconjugated
Storage:	Store at -20°C as received.
Stability:	Stable for 12 months from date of receipt.
Predicted Protein Size:	46 kDa
Gene Name:	amnion associated transmembrane protein
Database Link:	<a href="#">NP_112205</a> <a href="#">Entrez Gene 81693 Human</a> <a href="#">Q9BXJ7</a>



[View online »](#)

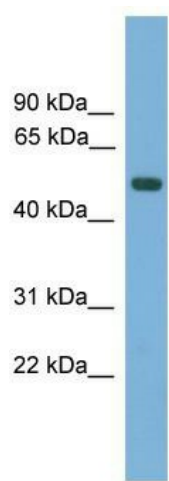
**Background:** The protein encoded by this gene is a type I transmembrane protein. It is thought to modulate bone morphogenetic protein (BMP) receptor function by serving as an accessory or coreceptor, and thus facilitates or hinders BMP binding. It is known that the mouse AMN gene is expressed in the extraembryonic visceral endoderm layer during gastrulation, but it is found to be mutated in amnionless mouse. The encoded protein has sequence similarity to short gastrulation (Sog) and procollagen IIA proteins in *Drosophila*.

**Synonyms:** amnionless; PRO1028

**Note:** Immunogen Sequence Homology: Human: 100%; Mouse: 100%; Pig: 93%; Horse: 93%; Bovine: 93%; Guinea pig: 93%; Dog: 86%; Rat: 86%; Zebrafish: 85%

**Protein Families:** Druggable Genome, Transmembrane

### Product images:



WB Suggested Anti-AMN Antibody Titration: 0.2-1 ug/ml; Positive Control: Human Liver