

Product datasheet for **TA339570**

UNC93B (UNC93B1) Rabbit Polyclonal Antibody

Product data:

Product Type:	Primary Antibodies
Applications:	WB
Recommended Dilution:	WB
Reactivity:	Human
Host:	Rabbit
Isotype:	IgG
Clonality:	Polyclonal
Immunogen:	The immunogen for anti-UNC93B1 antibody: synthetic peptide directed towards the N terminal of human UNC93B1. Synthetic peptide located within the following region: LKNVLAASAGGMLTYGVYLGLLQMQLILHYDETYREVKYGNMGLPDIDSK
Formulation:	Liquid. Purified antibody supplied in 1x PBS buffer with 0.09% (w/v) sodium azide and 2% sucrose.
Concentration:	lot specific
Purification:	Protein A purified
Conjugation:	Unconjugated
Storage:	Store at -20°C as received.
Stability:	Stable for 12 months from date of receipt.
Predicted Protein Size:	67 kDa
Gene Name:	unc-93 homolog B1 (C. elegans)
Database Link:	NP_112192 Entrez Gene 81622 Human Q9H1C4
Background:	UNC93B1 is a protein with similarity to the C. elegans unc93 protein. The Unc93 protein is involved in the regulation or coordination of muscle contraction in the worm. This gene encodes a protein with similarity to the C. elegans unc93 protein. The Unc93 protein is involved in the regulation or coordination of muscle contraction in the worm.
Synonyms:	IIAE1; Unc-93B1; UNC93; UNC93B

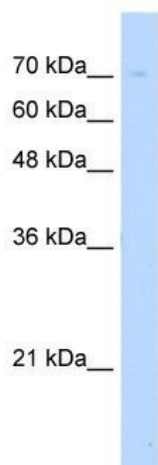


[View online »](#)

Note: Immunogen Sequence Homology: Dog: 100%; Pig: 100%; Rat: 100%; Horse: 100%; Human: 100%; Mouse: 100%; Bovine: 100%; Zebrafish: 100%; Guinea pig: 100%

Protein Families: Transmembrane

Product images:



WB Suggested Anti-UNC93B1 Antibody Titration:
5.0 ug/ml; Positive Control: Jurkat cell lysate