

## Product datasheet for **TA339568**

### Apolipoprotein L 2 (APOL2) Rabbit Polyclonal Antibody

#### Product data:

Product Type:	Primary Antibodies
Applications:	WB
Recommended Dilution:	WB
Reactivity:	Human
Host:	Rabbit
Isotype:	IgG
Clonality:	Polyclonal
Immunogen:	The immunogen for anti-APOL2 antibody: synthetic peptide directed towards the middle region of human APOL2. Synthetic peptide located within the following region: DVVSLAYESKHLLEGAKSESAEELKKRAQELEGKLNFLTKIHEMLQPGQD
Formulation:	Liquid. Purified antibody supplied in 1x PBS buffer with 0.09% (w/v) sodium azide and 2% sucrose. <i>Note that this product is shipped as lyophilized powder to China customers.</i>
Concentration:	lot specific
Purification:	Protein A purified
Conjugation:	Unconjugated
Storage:	Store at -20°C as received.
Stability:	Stable for 12 months from date of receipt.
Predicted Protein Size:	37 kDa
Gene Name:	apolipoprotein L2
Database Link:	<a href="#">NP_112092</a> <a href="#">Entrez Gene 23780 Human</a> <a href="#">Q9BQE5</a>
Background:	This gene is a member of the apolipoprotein L gene family. The encoded protein is found in the cytoplasm, where it may affect the movement of lipids or allow the binding of lipids to organelles. Two transcript variants encoding the same protein have been found for this gene.
Synonyms:	APOL-II; APOL3

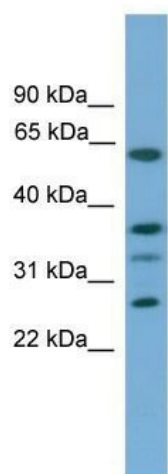


[View online »](#)

Note: Immunogen Sequence Homology: Human: 100%; Rabbit: 79%

Protein Families: Druggable Genome, Transmembrane

### Product images:



WB Suggested Anti-APOL2 Antibody Titration: 0.2-1 ug/ml; Positive Control: MCF7 cell lysate