

## Product datasheet for TA339566

### APOLD1 Rabbit Polyclonal Antibody

#### Product data:

Product Type:	Primary Antibodies
Applications:	WB
Recommended Dilution:	WB
Reactivity:	Human
Host:	Rabbit
Isotype:	IgG
Clonality:	Polyclonal
Immunogen:	The immunogen for anti-APOLD1 antibody: synthetic peptide directed towards the middle region of human APOLD1. Synthetic peptide located within the following region: LIPRRAEGDTKVSQAVLKAKIQKLAESLESCTGALDELSEQLSRVQLCT
Formulation:	Liquid. Purified antibody supplied in 1x PBS buffer with 0.09% (w/v) sodium azide and 2% sucrose. <i>Note that this product is shipped as lyophilized powder to China customers.</i>
Concentration:	lot specific
Purification:	Protein A purified
Conjugation:	Unconjugated
Storage:	Store at -20°C as received.
Stability:	Stable for 12 months from date of receipt.
Predicted Protein Size:	27 kDa
Gene Name:	apolipoprotein L domain containing 1
Database Link:	<a href="#">NP_110444</a> <a href="#">Entrez Gene 81575 Human</a> <a href="#">Q96LR9</a>
Background:	APOLD1 is an endothelial cell early response protein that may play a role in regulation of endothelial cell signaling and vascular function (Regard et al., 2004 [PubMed 15102925]).
Synonyms:	VERGE

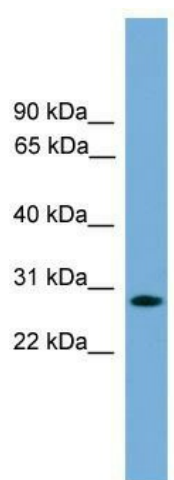


[View online »](#)

**Note:** Immunogen Sequence Homology: Human: 100%; Rat: 93%; Mouse: 93%; Dog: 86%; Bovine: 86%; Rabbit: 86%

**Protein Families:** Transmembrane

**Product images:**



WB Suggested Anti-APOLD1 Antibody Titration:  
0.2-1 ug/ml; Positive Control: Jurkat cell lysate