

Product datasheet for TA339565

GDPD5 Rabbit Polyclonal Antibody

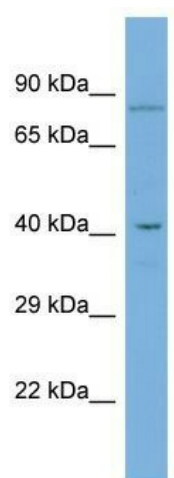
Product data:

Product Type:	Primary Antibodies
Applications:	WB
Recommended Dilution:	WB
Reactivity:	Human
Host:	Rabbit
Isotype:	IgG
Clonality:	Polyclonal
Immunogen:	The immunogen for Anti-GDPD5 antibody is: synthetic peptide directed towards the middle region of Human GDPD5. Synthetic peptide located within the following region: VFALYLAPLTISSPCIMEKKDLGPKPALIGHRGAPMLAPEHTLMSFRKAL
Formulation:	Liquid. Purified antibody supplied in 1x PBS buffer with 0.09% (w/v) sodium azide and 2% sucrose.
Concentration:	lot specific
Purification:	Protein A purified
Conjugation:	Unconjugated
Storage:	Store at -20°C as received.
Stability:	Stable for 12 months from date of receipt.
Predicted Protein Size:	42 kDa
Gene Name:	glycerophosphodiester phosphodiesterase domain containing 5
Database Link:	NP_110419 Entrez Gene 81544 Human Q8WTR4
Background:	Glycerophosphodiester phosphodiesterases, such as GDPD5, are involved in glycerol metabolism.
Synonyms:	GDE2; PP1665
Note:	Immunogen Sequence Homology: Dog: 100%; Pig: 100%; Rat: 100%; Horse: 100%; Human: 100%; Mouse: 100%; Bovine: 100%; Rabbit: 100%; Guinea pig: 86%


[View online »](#)

Protein Families: Transmembrane

Product images:



Host: Rabbit; Target Name: GDPD5; Sample
Tissue: COLO205 Whole Cell lysates; Antibody
Dilution: 1.0 ug/ml