

Product datasheet for **TA339564**

sphingosine 1 phosphate phosphatase 1 (SGPP1) Rabbit Polyclonal Antibody

Product data:

Product Type:	Primary Antibodies
Applications:	WB
Recommended Dilution:	WB
Reactivity:	Human
Host:	Rabbit
Isotype:	IgG
Clonality:	Polyclonal
Immunogen:	The immunogen for anti-SGPP1 antibody: synthetic peptide directed towards the middle region of human SGPP1. Synthetic peptide located within the following region: THKYAPFIIIGLHLALGIFSFTLDTWSTSRGDTAEILGSGAGIACGSHVT
Formulation:	Liquid. Purified antibody supplied in 1x PBS buffer with 0.09% (w/v) sodium azide and 2% sucrose. <i>Note that this product is shipped as lyophilized powder to China customers.</i>
Concentration:	lot specific
Purification:	Protein A purified
Conjugation:	Unconjugated
Storage:	Store at -20°C as received.
Stability:	Stable for 12 months from date of receipt.
Predicted Protein Size:	49 kDa
Gene Name:	sphingosine-1-phosphate phosphatase 1
Database Link:	NP_110418 Entrez Gene 81537 Human Q9BX95
Background:	Sphingosine-1-phosphate (S1P) is a bioactive sphingolipid metabolite that regulates diverse biologic processes. SGPP1 catalyzes the degradation of S1P via salvage and recycling of sphingosine into long-chain ceramides (Mandala et al., 2000 [PubMed 10859351]; Le Stunff et al., 2007 [PubMed 17895250]).
Synonyms:	SPPase1



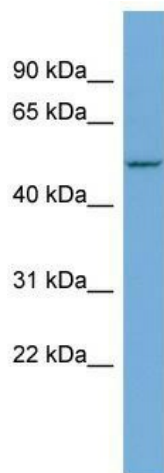
[View online »](#)

Note: Immunogen Sequence Homology: Dog: 100%; Pig: 100%; Rat: 100%; Horse: 100%; Human: 100%; Mouse: 100%; Bovine: 100%; Rabbit: 100%; Guinea pig: 100%; Zebrafish: 93%

Protein Families: Druggable Genome, Phosphatase, Transmembrane

Protein Pathways: Sphingolipid metabolism

Product images:



WB Suggested Anti-SGPP1 Antibody Titration: 0.2-1 ug/ml; ELISA Titer: 1: 1562500; Positive Control: Jurkat cell lysate